



INDIAN INSTITUTE OF TECHNOLOGY DELHI

PROSPECTUS 2026 - 27





## VISION

- To contribute to India and the World through excellence in scientific and technical education and research; to serve as a valuable resource for industry and society; and to remain a source of pride for all Indians.

## MISSION

- To generate new knowledge by engaging in cutting-edge research and to promote academic growth by offering state-of-the-art undergraduate, postgraduate and doctoral programmes.
- To identify, based on an informed perception of Indian, regional and global needs, areas of specialization upon which the Institute can concentrate.
- To undertake collaborative projects which offer opportunities for long term interaction with academia and industry.
- To develop human potential to its fullest extent so that intellectually capable and imaginatively gifted leaders can emerge in a range of professions.



## VALUES

- Academic integrity and accountability.
- Respect and tolerance for the views of every individual.
- Attention to issues of national relevance as well as of global concern.
- Breadth of understanding, including knowledge of the human sciences.
- Appreciation of intellectual excellence and creativity.
- An unfettered spirit of exploration, rationality and enterprise.



# PROSPECTUS

2026- 2027



**INDIAN INSTITUTE OF TECHNOLOGY DELHI**

HAUZ KHAS, NEW DELHI-110016

In case of queries, please visit IIT Delhi website ([www.iitd.ac.in](http://www.iitd.ac.in)) or contact:

### DEAN, ACADEMICS



: +91 11 2659 1708



: [deanacad@admin.iitd.ac.in](mailto:deanacad@admin.iitd.ac.in)

### ASSOCIATE DEAN, ACADEMICS (Curriculum)



: +91 11 2659 7004



: [adcur@admin.iitd.ac.in](mailto:adcur@admin.iitd.ac.in)

### ASSOCIATE DEAN, ACADEMICS (PG Research)



: +91 11 2659 7005



: [adres@iitd.ac.in](mailto:adres@iitd.ac.in)

### ASSOCIATE DEAN, ACADEMICS (Outreach and New Initiatives)



: +91 11 2659 8726



: [adoni@iitd.ac.in](mailto:adoni@iitd.ac.in)

### DEPUTY REGISTRAR, ACADEMICS



: +91 11 2659 1737



: [drpgsr@iitd.ac.in](mailto:drpgsr@iitd.ac.in)

### ASSISTANT REGISTRAR / SR. CONSULTANT, ACADEMICS



: +91 11 2654 8796 / 2659 1718 / 8511



: [aracad2@admin.iitd.ac.in](mailto:aracad2@admin.iitd.ac.in), [arugs@iitd.ac.in](mailto:arugs@iitd.ac.in), [aracad@admin.iitd.ac.in](mailto:aracad@admin.iitd.ac.in)

Copyright © IIT Delhi

Produced by : Publication Cell

April, 2026

# TABLE OF CONTENTS

---



**1**

**INTRODUCTION**



**6**

**ACADEMICS**



**16**

**ADMISSIONS**



**33**

**FEES**



**37**

**STUDENT AFFAIRS**



**50**

**CENTRAL FACILITIES**



**70**

**INDUSTRIAL RESEARCH AND DEVELOPMENT**



**78**

**ADMINISTRATIVE STRUCTURE**

## INTRODUCTION

The Indian Institute of Technology Delhi is one of the 23 IITs created to be Centres of Excellence for training, research and development in science, engineering and technology in India.

Established as a College of Engineering in 1961, the Institute was later declared as an Institution of National Importance under the “Institutes of Technology (Amendment) Act, 1963” and was renamed as “Indian Institute of Technology Delhi”. It was then accorded the status of a Deemed University with powers to decide its own academic policy, to conduct its own examinations, and to award its own degrees.

The Institute was declared as an “Institute of Eminence” by the Government of India in 2018.

Since its inception, close to 66,000 students have graduated from IIT Delhi in various disciplines including Engineering, Physical Sciences, Management, and Humanities & Social Sciences. Of these, 8,038 students graduated with Ph.D. degree and 22,336 students graduated with B. Tech. degree. The rest obtained Master’s Degree in Engineering, Sciences, Humanities & Social Sciences, Public Policy, and Business Administration. These alumni today work as scientists, technologists, business managers and entrepreneurs. There are several alumni who have moved away from their original disciplines and have taken to administrative services, active politics or are with NGOs. In doing so, they have contributed significantly to building of this nation, and to industrialization around the world.

IIT Delhi is situated in Hauz Khas in South Delhi, which is a landmark place in the colourful and chequered history of Delhi.

Bounded by the Sri Aurobindo Marg on the east, the Jawaharlal Nehru University Campus on the west, the National Council of Educational Research and Training on the south, and the Outer Ring Road on the north, the Institute campus is flanked by Qutub Minar and the Hauz Khas monuments.

Well connected to the major city centres by open and wide roads, the Institute campus is about 19 k.m. away from the Delhi Junction (popularly known as Old Delhi Railway Station), 14 k.m. from the New Delhi Railway Station, 21 k.m. from the Inter State Bus Terminal (Kashmere Gate) and 10 k.m. from Delhi Airport. Delhi Metro has two gates opening at the Institute campus.



Campus of the Institute extends to an area of 312 acres. With many topographical features, imaginatively laid out with picturesque landscape, numerous buildings of various nature and stature, and clean and wide roads, the campus presents a spectacle of harmony in architecture and natural beauty.

The campus area is divided into four functional zones: (i) Residential zone for students; (ii) Residential zone for the faculty and staff; (iii) Academic zone for academic buildings and workshops; and (iv) Cultural-cum-social and recreational zone for students.

The campus also offers amenities like staff clubs, hospital, shopping centre, banks, post office, community centre, stadium, playing fields, etc. The Student Activity Centre provides all facilities for students' extra-curricular activities and physical development.

The central double-storied recreation block with a swimming pool and a gymnasium hall offers amenities such as squash courts, hobbies workshops / seminar rooms, music rooms and other multipurpose rooms for reading and indoor games. The amphitheater with large capacity constructed in modern style is an added amenity to the centre.

IIT Delhi has been extending its boundaries. An extension campus has been established in Sonapat, Haryana, over 50 acres of land allocated by the Government of Haryana. In the year 2023, IIT Delhi established its international campus in Abu Dhabi, UAE. The IIT Delhi– Abu Dhabi campus is a visionary collaboration between the UAE and India. It represents the two governments' commitment to providing a world-class learning environment for students, faculty, and researchers in the UAE and across the globe.

## 1.1 Administration

IIT Delhi is an autonomous statutory organization functioning within the "Institutes of Technology Act" as amended by "The Institutes of Technology (Amendment) Act, 1963".

The Indian Institutes of Technology are administered centrally by the IIT Council, an apex body established by the Government of India to co-ordinate the activities of these Institutes.

The Hon'ble Minister of Education of the Government of India is the Chairperson of the IIT Council. Each Indian Institute of Technology has a Board of Governors responsible for its overall administration and control.

**Harish Salve**  
**King's Counsel & Sr. Advocate**  
Chairperson  
Board of Governors



**Harish Salve, King's Counsel & Sr. Advocate**, did his Bachelor of Commerce from Nagpur University in 1975.

He qualified as a Chartered Accountant in 1978 and joined Salve and Co as a partner.

He obtained a bachelor's degree in law [LLB] from Nagpur University in 1980 and joined the bar.

He worked with J.B. Dadachanji & Co. as a trainee, and then as an associate. He and then joined the Chamber of Mr. Soli Sorabjee (former Attorney General of India). He set up independent chambers in 1986. He was designated a Senior Advocate in 1992. He became the Solicitor General of India in 1999 – youngest ever Solicitor General at the age of 43 years. He returned to private practice in November 2002.

He joined the English bar in 2013 and was appointed a Queens Counsel in 2020 [now known as Kings Counsel].

He was conferred with the Padma Bhushan (the third Highest Civilian Award in India) in 2015

He now practices in the courts of England and Wales and in the Supreme Court of India and the High Courts.

He also has a large arbitration practice as leading counsel as well as an arbitrator.

He has represented India in two cases before the International Court of Justice and is now representing India in the dispute with Pakistan relating to the Indus River Valley.

In 1996, he was appointed Amicus Curiae by the Supreme Court of India in the case relating to the enforcement of the Forest Protection Act 1980, and was appointed Amicus Curiae by the Supreme Court of India in 1996 in a case dealing with the air pollution in Delhi and on account of the orders of the Supreme Court of India made in this case, the bus fleet in Delhi were converted to CNG.

He is a very experienced and senior lawyer with a global reputation for international commercial arbitration and litigation. His practice also encompasses public international law, human rights, civil fraud, public, energy and tax.

## Prof. Rangan Banerjee

Director

IIT Delhi



**Prof. Rangan Banerjee** is the Director of IIT Delhi (since February 2022) and a professor in the Department of Energy Science and Engineering. He has done his B.Tech. in Mechanical Engineering and his Ph.D. from IIT Bombay. He had a few years of experience at Cadbury's TERI Engineers India Ltd. before joining the faculty at IIT Bombay in 1993. He has helped to set up a Department of Energy Science and Engineering at IIT Bombay and was its first Head.

He has been involved in several projects for industry on energy efficiency, renewables and modelling. He has been the Dean (R&D) at IIT Bombay and was responsible for several new initiatives for research infrastructure, industry consortia and centres, technology transfer and licensing and supporting student research.

He was involved in setting up a Megawatt Scale Solar Thermal Power Plant cum test Facility Sponsored by MNRE. He was the faculty advisor of Team Shunya, a student team that represented India in Solar Decathlon Europe, China and the US and built houses running on solar energy.

He has advised the city of Mumbai the Maharashtra Electricity Regulatory Commission, MNRE, Planning Commission and the Niti Aayog on energy related issues. He was a lead author of the Global Energy Assessment Coordinated by the International Institute of Applied Systems Analysis and was a member of the International Review Committee for the RCUK Review of UKs Energy programme.

He has been awarded the excellence in Teaching award at IIT Bombay and is a Fellow of the Indian National Academy of Engineering. He has also been an Adjunct Professor (Honorary) in the department of Engineering and Public Policy at Carnegie Mellon University.

## The Senate

The senate decides the academic policy of the Institute, and approves curriculum, courses & examination results. It appoints committees to look into specific academic matters arising from time to time. The teaching, training and research activities of various academics units at the Institute are constantly under review to improve both facilities and standard. The Director of the Institute is the chairperson of the senate.

## Institute Committees

Financial advice to the Institute is rendered by the finance committee. Similarly, there is a Buildings and Works Committee to advise on matters relating to buildings and works activity. These committees are appointed by the Board of Governors. In addition, there are a number of other committees like the Board of Academic Programmes, Board of Educational and Research Planning, appointed by the Senate to help the administration in the efficient running of the Institute.



IIT Delhi provides science-based engineering education with a view to produce quality engineer-scientists. The curriculum provides broad based knowledge and simultaneously builds a temper for the life long process of learning and exploring.

### 2.1 Academic System

At the undergraduate level, a student needs to do compulsory foundation courses in the areas of basic Sciences, Humanities & Social Sciences, and Engineering Sciences apart from departmental requirements.

At postgraduate level, several specializations, in the form of various M.S.(R.), M.Tech., M.B.A., M.Des., M.P.P., M.A., P.G.D.I.I.T., and M.Sc., are available and the students get an exposure and training in research in their chosen fields.

The Institute has strong Ph.D. programmes and the students carry out advanced research under the guidance of the members of the Institute faculty.

The Institute has revised the curriculum of its Undergraduate, Postgraduate and PhD programmes. Each course in each programme has been reviewed and revamped. The new curriculum has been implemented from the academic year 2025-26.

IIT Delhi reviews its curriculum periodically, approximately every ten years. The current curriculum review process was initiated in early 2022.



During the curriculum review exercise, extensive feedback was taken from various stakeholders, i.e., from thousands of students, alumni, and industry experts. Each department, in turn, obtained further feedback from hundreds of stakeholders to frame the finer aspects of the curriculum.

The main themes of the revised undergraduate curriculum are flexibility, a deep focus on hands-on learning, and, in line with the needs of the modern world, emphasis on environment and sustainability, creative expression, ethical reasoning, and emerging trends in technology (such as artificial intelligence and machine learning).

An academic year runs from July through June next year and comprises two semesters. Typically, the 1<sup>st</sup> semester starts in the last week of July and ends in the 1<sup>st</sup> week of December; and the 2<sup>nd</sup> semester starts in the first week of January and ends in the 2<sup>nd</sup> week of May. Additionally, the summer semester which starts in the 3<sup>rd</sup> week of May and ends in the 2<sup>nd</sup> week of July, is utilised in some exceptional cases. Detailed activities are given in the Semester Schedule that is available before the start of every semester.

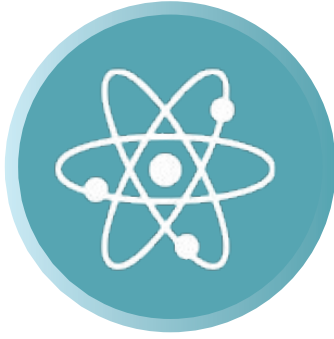
## 2.2 Academic Structure

The major academic units of the Institute are the Departments, Centres, and Schools. Interdisciplinary research is organized in programmes. The various academic units are listed below, and details are given latter in this document. The activities of departments include teaching at all levels and research. The centres focus on interdisciplinary research and some teaching mostly at the postgraduate level.



### DEPARTMENTS

- Applied Mechanics
- Biochemical Engineering and Biotechnology
- Chemical Engineering
- Chemistry
- Civil and Environmental Engineering
- Computer Science and Engineering
- Design
- Electrical Engineering
- Energy Science and Engineering
- Humanities and Social Sciences
- Management Studies
- Materials Science and Engineering
- Mathematics
- Mechanical Engineering
- Physics
- Textile and Fibre Engineering



## CENTRES

- Applied Research in Electronics
- Atmospheric Sciences
- Automotive Research and Tribology
- Biomedical Engineering
- National Resource Centre for Value Education in Engineering
- Optics and Photonics
- Rural Development and Technology
- Sensors, Instrumentation and Cyber-Physical Systems Engineering
- Transportation Research and Injury Prevention



## SCHOOLS

- Amar Nath and Shashi Khosla School of Information Technology
- Bharti School of Telecommunication Technology and Management
- Kusuma School of Biological Sciences
- School of Public Policy
- School of Interdisciplinary Research
- Yardi School of Artificial Intelligence



## INTERDISCIPLINARY RESEARCH PROGRAMME

- Opto-Electronics and Optical Communication
- VLSI Design Tools and Technology

## 2.3 Research and Innovation

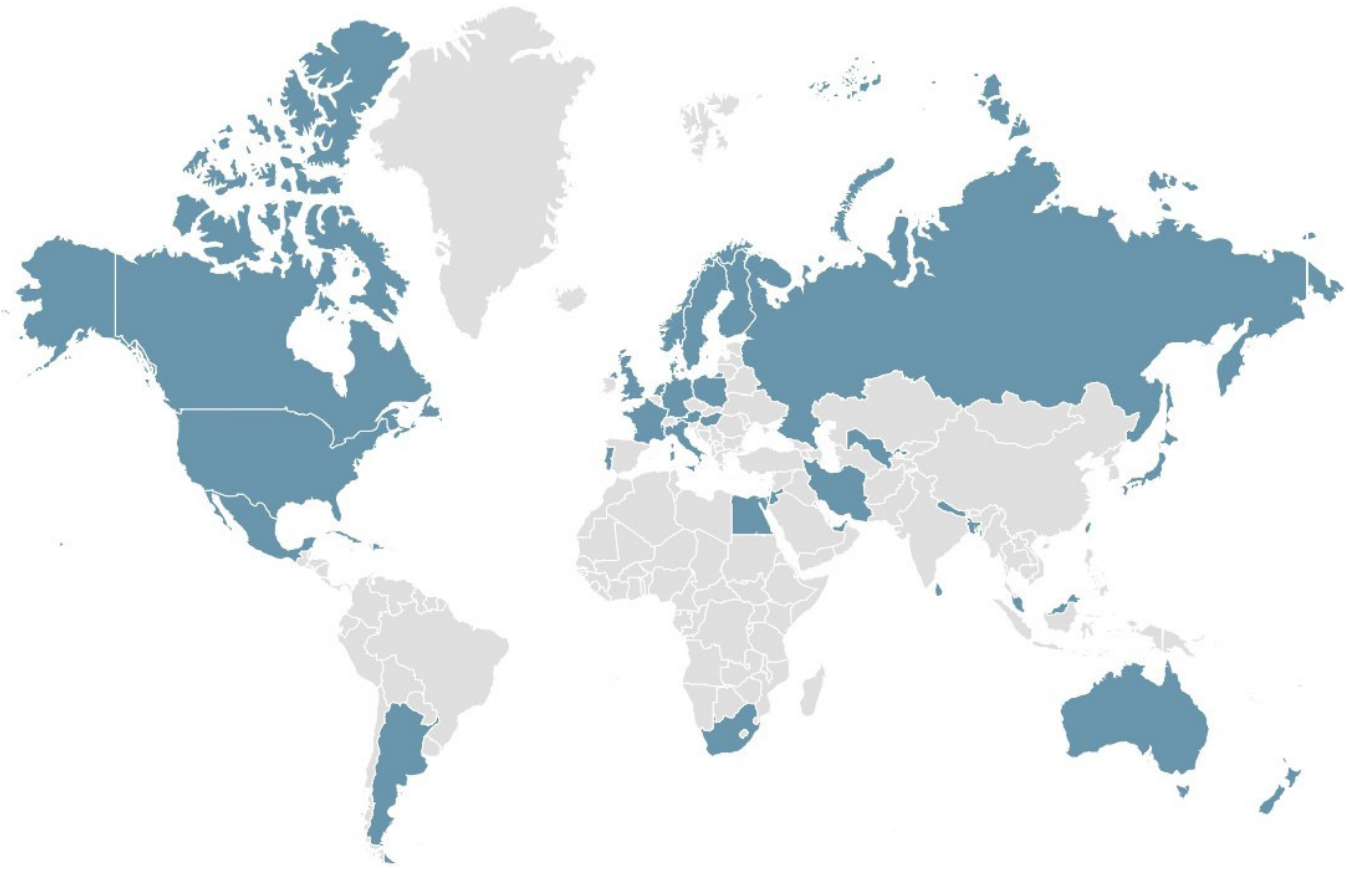
IIT Delhi places strong emphasis on Research & Development, and Innovation. Faculty members undertake research in the fields of their interest. Many postgraduate students and some undergraduate students are also involved in these activities, as the curriculum provides facilities for the same. While some research is funded by the Institute, majority of research activities / projects are funded by sponsoring agencies and / or industries.

All projects funded by Government Agencies and some Industry funded projects are managed through the Institute's "Industrial Research and Development (IRD) Unit". Innovative technology development and industrial outreach are also facilitated by the "Foundation for Innovation and Technology Transfer (FITT)", a non-profit society associated with IIT Delhi and located on the campus.

## 2.4 Collaborations



IIT Delhi is actively engaged in collaborative programs with industry, academia, and governments at both national and international levels. This engagement ensures that the Institute remains at the forefront of scientific and technological advancements while fostering the sharing of knowledge for mutual benefit. Currently, IIT Delhi has established 86 ongoing International Memorandum of Understanding with various organizations and institutions across the globe.



**Argentina**

**Australia**

**Austria**

**Bangladesh**

**Canada**

**Cuba**

**Denmark**

**Dominican Republic**

**Egypt**

**Finland**

**France**

**Germany**

**Hungary**

**Iran**

**Israel**

**Italy**

**Japan**

**Malaysia**

**Jordan**

**Nepal**

**Mexico**

**Netherlands**

**New Zealand**

**Norway**

**Poland**

**Portugal**

**Russia**

**South Africa**

**Sri Lanka**

**Sweden**

**Taiwan**

**UAE**

**United Kingdom**

**USA**

**Uzbekistan**

## 2.5 Student Exchange Programmes



IIT Delhi actively encourages students to participate in exchange programs with leading institutions across various countries. Studying abroad provides students with invaluable exposure to multicultural and global environments, allowing them to experience the host country with fresh perspectives, customs, and activities. Through numerous exchange programs, students have the opportunity to visit foreign universities, while students from those institutions also have the chance to study at IIT Delhi. These foreign exchange opportunities range from semester exchanges to year-long programs. During their time abroad, students gain insights into the workings of different countries and the cultural features that define them. This exposure significantly enhances their decision-making and independent thinking skills. For further information, please visit <https://international.iitd.ac.in/student-exchanges/>. Additionally, under the Erasmus+ Mobility Programme, IIT Delhi students can apply for Erasmus+ scholarships, either by reaching out directly to the course coordinator or through an exchange process. Erasmus+ facilitates short-term mobility for students, researchers, and staff to European universities from other parts of the world.

## 2.6 Academic Outreach and New Initiatives



At IIT Delhi, the Office of Academic Outreach & New Initiatives (AONI) works closely with students to provide national and international exposure through a range of outreach initiatives. The office is currently being headed by Prof. Shilpi Sharma, Associate Dean (Academics Outreach & New Initiatives) (known among the students as ADONI). ADONI oversees the student-run Co-curricular and Academic Interaction Council (CAIC) which has 13 technical clubs and 14 technical societies comprising a student team of over 700 members.

AONI frequently hosts global leaders and has hosted pioneers including- The Bill Gates, Dr. Raghuram Rajan, Ms. Sunita Williams, Dr. Werner Vogels, and more. The office facilitates interactions of students with leading organizations such as Amazon, AMD, Meta, CNBC TV18, and many more.

The annual technical fest- TRYST, is one of the highlights organised by the CAIC team. The council also provides opportunities for students to participate in prestigious competitions such as Formula Bharat, iGEM, DD Robocon, and more. The team for the annual Inter IIT Tech Meet is led by members of CAIC. Several outreach initiatives provide students with the opportunity to showcase their ideas on a global stage through platforms such as TEDx. The unit is expanding through the establishment of national and international chapters, which are currently in the pipeline.

## 2.7 Academic Programmes

IIT Delhi offers a variety of academic programmes for students with a wide range of backgrounds leading to the degrees listed below:

### DOCTOR OF PHILOSOPHY (PH.D.)

All Departments, Centres, and Schools offer Ph.D. Programmes.

## MASTER OF TECHNOLOGY (M.TECH.)

- Engineering Analysis and Design
- Biomolecular and Bioprocess Engineering
- Chemical Engineering
- Molecular Engineering :Chemical Synthesis & Analysis
- Geotechnical and Geoenvironmental Engineering
- Rock Engineering and Underground Structures
- Structural Engineering
- Energy & Environment Technologies and Engineering
- Renewable Energy Technologies and Management
- Communications Systems
- Integrated Electronics and Circuits
- Computing and Intelligent System Engineering
- Systems, Learning and Control
- Power Electronics, Electrical Machines and Drives
- Smart and Sustainable Power Systems
- Materials Science and Engineering
- Mechanical Design
- Industrial Engineering
- Production Engineering
- Thermal Engineering
- Applied Optics
- Water Resources Engineering
- Construction Engineering and Management
- Construction Technology and Management
- Environmental Engineering and Management
- Transportation Engineering
- Computer Science and Engineering
- Solid State Materials
- Fibre Engineering and Textile Chemical Processing
- Textile Engineering
- Radio Frequency Design and Technology
- Electric Mobility
- Atmospheric-Oceanic Science and Technology
- Biomedical Engineering
- Photonics
- Machine Intelligence and Data Science (MINDS)
- Cyber Security
- Instrument Technology
- Optoelectronics and Optical Communication
- Robotics
- Telecommunication Technology and Management
- VLSI Design Tools and Technology

## MASTER OF SCIENCE (RESEARCH) [M.S.(R.)]

- Applied Mechanics
- Atmospheric and Oceanic Science
- Automotive Research and Tribology
- Telecommunication Technology and Management
- Mechanical Engineering
- Materials Science and Engineering
- Healthcare Technology
- Biological Sciences
- VLSI Design Tools and Technology
- Information Technology
- Optics and Photonics
- Biochemical Engineering and Biotechnology
- Chemical Engineering
- Civil and Environmental Engineering
- Computer Science and Engineering
- Energy Science and Engineering
- Electrical Engineering
- Sensors, Instrumentation and Cyber-Physical Systems Engineering
- Machine Intelligence and Data Science
- Transportation Safety and Injury Prevention

## MASTER OF BUSINESS ADMINISTRATION (M.B.A)

- M.B.A.
- Telecommunication Systems Management
- Executive M.B.A. Programme (Part-time)

## MASTER OF SCIENCE (M.SC.)

- Chemistry
- Cognitive Science
- Economics
- Mathematics
- Physics
- Biological Science

## MASTER OF PUBLIC POLICY (M.P.P.)

- Public Policy

## MASTER OF ARTS (M.A.)

- Culture, Society, and Thought

## JOINT M.SC. IITD-SORBONNE

- Biological Science

## MASTER OF DESIGN (M.DES.)

- Industrial Design

## DUAL DEGREE (B.TECH. & M.TECH.)

- Chemical Engineering
- Computer Science and Engineering
- Mathematics and Computing

## POSTGRADUATE DIPLOMA

- P.G. D.I.I.T (Naval Construction) (for Candidates Sponsored by the Indian Navy)
- Joint P.G. Diploma in Visionary Leadership in Manufacturing (VLFM) (Jointly with IIM Mumbai)

## BACHELOR OF SCIENCE (B.S.)

- Chemistry

## BACHELOR OF DESIGN (B.DES.)

- Design

## BACHELOR OF TECHNOLOGY (B.TECH.)

- Biochemical Engineering and Biotechnology
- Chemical Engineering
- Computer Science and Engineering
- Civil Engineering
- Electrical Engineering
- Mechanical Engineering
- Production and Industrial Engineering
- Electrical Engineering (Power and Automation)
- Energy Science and Engineering
- Engineering and Computational Mechanics
- Materials Engineering
- Mathematics and Computing
- Engineering Physics
- Textile
- Design

Admission to IIT Delhi is possible through various entrance examinations, like the Joint Entrance Examination (JEE) Advanced, Undergraduate Common Entrance Examination for Design (UCEED), Graduate Aptitude Test in Engineering (GATE), Common Entrance Examination for Design (CEED), Common Admission Test (CAT) and Joint Admission Test in M.Sc. (JAM), for its various degrees and programmes.

### **3.1 Undergraduate Programmes**

Admission to all Undergraduate Programmes listed in Chapter 2 are made through the Joint Entrance Examination (JEE) (Main and Advanced) for B.Tech./B.S./Dual and Undergraduate Common Entrance Examination for Design (UCEED) for B.Des. (for further information, please visit UCEED website: <https://www.uceed.iitb.ac.in/2026/>) For B.Tech. in Design the admission will be through JEE (main and Advanced) with UCEED as a qualification.

### **VISITING STUDENTSHIP**

#### **For Undergraduate Students**

A student, who is registered for an Engineering Technology degree in a recognized Institute/University in India or abroad, is eligible for being considered as a visiting student at IIT Delhi, for a maximum period of 6 months/one semester. More details can be obtained from the link <https://academics.iitd.ac.in/>

### **For High School Students**

A student should be registered in a recognized high school in India or abroad to avail laboratory and other academic facilities at IIT Delhi for a period of not exceeding six months. In case of a student who is not Indian National or Indian citizen, admission as a visiting student is subject to valid visa for their joining at IIT Delhi.

### **Admission of UG Students to PG Programmes with Advanced Standing**

UG students of IIT Delhi with advanced standing are eligible for admission to PG programmes at IIT Delhi. Details are given in the Courses of Study.

### **Summer Research Fellowship**

In order to expose students from other Engineering Colleges / Institutes to the ongoing research activities at IIT Delhi, Institute has Summer Research Fellowship programme for undergraduate students from other Engineering Institutes. Further details can be obtained from the link <https://academics.iitd.ac.in/>

## **3.2 Postgraduate Programmes**

### **PROCEDURE FOR ADMISSION**

Applications are invited from candidates by advertising the programmes in March/October every year. Subsequently, the candidates have to apply online as specified in the advertisements.

In general, admission are made through the Graduate Aptitude Test in Engineering (GATE) for M.Tech. programmes, Common Entrance Examination for Design (CEED) for M.Des., Common Admission Test (CAT) for M.B.A., and Joint Admission Test (JAM) for M.Sc. programmes. For detailed eligibility conditions and mode of selection, please see section 3.5.

Admission to Ph.D./ M.S. (Research) programme is also possible any time during the year through Department Research Committee (DRC) / Centre Research Committee (CRC) / School Research Committee (SRC) with the approval of Dean, Academics. For more details, please visit the Institute website - [www.iitd.ac.in](http://www.iitd.ac.in)

## **IIT DELHI FOLLOWS RESERVATIONS IN ADMISSIONS (BOTH UG AND PG) AND CHARGES FEES AS PRESCRIBED BY GOVERNMENT OF INDIA FROM TIME TO TIME.**

Migration from one PG Programme to another PG Programme of the Institute Provision exists for the PG students of the Institute to move from (i) M.Tech. / M.S. (R) to Ph.D., (ii) M.Tech. to M.S. (R), and (iii) M.S.(R) to M.Tech. The details of the provisions are available in the courses of study.

### **ADMISSION OF FOREIGN NATIONALS**

Applications from foreign nationals for admission to the various postgraduate programmes (M.Sc./M.Tech./M.S.(Research)/M.Des./M.B.A./M.P.P./Ph.D.) at the Institute are received directly by the Institute. (For more details please visit: <https://international.iitd.ac.in/>)

- **International Ph.D. Fellowship Programme (IPFP) :**

IIT Delhi has announced the International Ph.D. Fellowship Programme (IPFP), as an effort to attract talented young minds globally. Under this programme, fellowship to international Ph.D. students are given at par with Indian students.

- **International Masters Scholarship Programme:**

A limited number of scholarships are available for International M.Tech./M. Des./M.S.(R.) Students, who have not qualified GATE/CEED. The assistance is at par with Indian students. However, such students will be selected by a central committee on the recommendations made by respective academic units at the time of selection.

- **Applicants under Cultural Exchange Fellowship Programme :**

The foreign nationals desiring admission to a postgraduate programme (M.Sc. /M.Des./M.Tech./MBA/M.S. (Research)/M.P.P./Ph.D.) at IIT Delhi under this Fellowship programme, are required to apply to the Indian High Commissions /Embassies, in their respective countries. After examining the case of the applicants, they will recommend/sponsor the names to the Indian Council for Cultural Relations (ICCR), New Delhi, which in turn, will recommend the applicants to this Institute for selection through due process.

- **Students under Memorandum of Understanding :**

Admission of foreign nationals to the various postgraduate programmes (M.Sc./M.Tech./M.S. (Research)/M.Des./M.B.A./M.P.P./M.A./Ph.D.) at the Institute will be made in accordance with the terms and conditions of the MoU agreed to between IIT Delhi and the Country/University/Institution concerned.

### 3.3 Joint Degree Programmes

IIT Delhi is actively pursuing Joint Degree Programmes at the doctoral level with the following internationally acclaimed institutions:

- **Joint Ph.D. Degree Programme between IIT Delhi and University of Queensland (UQ)**

Under the programme, Ph.D. students (from India, Australia and elsewhere) will be admitted. IITD/QU faculty will jointly formulate projects and students will be jointly selected against these projects.

Students in this academy will spend 3 years at the parent institution and at least 1 year at the partner. Students who successfully complete all the requirements of the programme will be awarded a joint degree by both institutions. (For more details, please visit: <https://uqiitd.org/>)

- **Joint Ph.D. Degree Programme between IIT Delhi and National Yang Ming Chiao Tung University (NYCU), Taiwan**

This is an Industry funded Joint Degree Programme. An academic and student exchange will be developed through the JDP whereby students who successfully complete all the requirements of the programme will be awarded a joint degree by both institutions. Students will be admitted at both institutions, at the time of joining or after they join the regular Ph.D. Programme. (For more details, please visit: [www.iitd.ac.in](http://www.iitd.ac.in)).

- **Joint Ph.D. Programme between IIT Delhi and Sorbonne University in the Area of Health Care.**

## 3.4 Scholarships

### UNDERGRADUATE PROGRAMMES

#### **Institute Merit-cum-Means (MCM) Scholarships**

The Institute offers Merit-cum-Means scholarships to undergraduate students in engineering and technology. These scholarships are offered to about 25% of the students whose annual family income is upto Rs. 8 lakh.

The present value of Merit-cum-Means scholarship is Rs. 4000/- per month for General/OBC/EWS students on production/uploading of valid family income proof annually on ERP. The recipient is also exempted from paying tuition fee.

For renewal of this MCM Scholarship, students need to maintain minimum CGPA and SGPA i.e. 6.0

#### **Institute Merit Prizes and Certificates**

The Institute offers Merit prizes and Certificates to the top 7% of the students of each 4-year B.Tech., and 5-year Dual Degree programmes each semester up to the 8th/10th Semester. The value of merit prize is Rs. 2500/- per semester.

#### **Institute Free Studentship**

The Institute offers tuition fees waiver to 10% of the students on the basis of means alone, if more than 25% students are eligible for MCM.

#### **Tuition Fees Exemption for SC, ST & PwD Students**

Tuition fee exemption is admissible to all SC/ST/PwD students irrespective of their parents'/guardians' income. Institute offers several other benefits to students from these categories on production/uploading of valid family income proof annually on ERP.

#### **Institute Free Messing and Pocket Allowance**

It covers the basic menu charges plus Rs. 1000/- per month as pocket allowance for SC and ST category for a fixed period of time (depending on the programme), provided the student's annual family income is less than Rs. 8 lakh.

Valid family income proof is required to be uploaded annually on scerner.

## **Donor Scholarships**

There are several donor scholarships in operation at the Institute. These scholarships are based on family income, programme, gender, branch, JEE rank and academic performance (SGPA/CGPA). These scholarships have been established by grants from alumni, individuals, trusts and organizations. Valid family income proofs are required to be uploaded annually on ERP. Majority of donor scholarships are auto processed.

## **POSTGRADUATE PROGRAMMES**

### **Institute Merit-cum-Means (MCM) Scholarships**

The Institute offers Merit-cum-Means scholarships to postgraduate students of M. A., M.Sc. and M.P.P. Programmes.

These scholarships are offered to about 25% of the students whose annual family income is upto Rs. 8 lakh.

The present value of Merit-cum-Means scholarship is Rs. 4000/- per month for General/OBC/EWS students and the recipient is exempted from paying tuition fee. Valid family income proof is required to be uploaded annually on ERP.

For renewal of this MCM Scholarship, students need to maintain minimum CGPA and SGPA i.e. 6.0

### **M.Tech., M.S. (Research), and M.Des. Programmes**

The Institute provides financial assistance to the students of M.Tech., M.S. (Research), and M.Des. Programmes as per prevailing Govt of India guidelines. This financial assistance is provided in lieu of teaching/research support. In addition, there are other fellowships and scholarships Instituted by industries, alumni, and individuals.

### **Ph.D. Programmes**

The Institute provides financial assistance to the students of Ph.D. programmes as per prevailing Govt of India guidelines. Under this scheme, students admitted on full-time basis are offered Teaching/ Research Assistantship, provided they are not getting any other equivalent fellowship from external sources. In addition, some high value fellowships are available for select scholars from various sources.

## 3.5 Admission to Postgraduate Programmes

### M.SC.

#### Minimum Eligibility for Admission :

##### Full Time

At least 55%\* aggregate marks or 5.5 CGPA/CPI on a 10-points scale without rounding off (taking into account all subjects including languages and subsidiaries, all years combined) in the qualifying degree for General/OBC (Non-Creamy Layer)/EWS category.

For Candidates with letter grades/CGPA on other scales, the equivalence will be decided by the Institute.

For M.Sc. (Chemistry): Bachelor's degree with Chemistry as a subject for three years/six semesters and Mathematics at (10+2) level.

For M.Sc. (Mathematics): Bachelor's degree with Mathematics as a subject for at least two years/four semesters.

For M.Sc. (Physics): Bachelor's degree with Physics as a subject for two years / four semesters and Mathematics for at least one year/two semesters.

For M.Sc. (Economics): a 3 or 4-year undergraduate degree in B.A./B.Sc./B.Com./B.Tech./B.E./B.Stat./B.Math. or equivalent

For M.Sc. (Cognitive Science): B.A./B.Sc./B.Com./B.M.S./B.Tech./B.E./B.Stat./B.Math.or equivalent.

For M.Sc. (Biological Science): 3 or 4 year Bachelor's Degree in any branch of STEM.

#### Selection Basis:

- JAM for M. Sc. in Chemistry, Mathematics, Physics, Economics and Biological Science
- GATE & Interview (for Cognitive Science)

## M.TECH.

### Minimum Eligibility for Admission :

#### Full Time

B.E./B.Tech./B.S./B.Sc (minimum 4 year in person)/M.Sc. or equivalent with (a) CGPA 6.00 on a 10-point scale or 60% marks in aggregate for General/OBC (Non Creamy Layer)/EWS Category with valid GATE score.

Currently registered students in Centrally Funded Technical Institutes (CFTIs) having CGPA of 8.00 or above (in a 10-point scale) in a minimum four-year undergraduate program pursued in person after completion of Class 12 (e.g. B.E./B.Tech./B.S./B.Sc. or equivalent degrees), admission to which is on the basis of JEE, the requirement of GATE/National Exam is waived.

AMIE/Grad. IETE are eligible, subject to condition at Note\* 7.

#### Selection Basis:

GATE and/ or (Written test and /or interview)

#### Part Time

B.E./B.Tech./B.S./B.Sc. (minimum 4 year in person)/M.Sc. or equivalent in relevant field with (a) CGPA 6.00 on a 10-point scale or 60% marks in aggregate for General/OBC (Non Creamy Layer)/EWS Category and minimum experience (as per table 3.5.1). Must submit No Objection Certificate from employer (as per Note 4) Organisation should be located within 50km. of IIT Delhi. Also see Note\* 4.

#### Selection Basis:

Written test and /or interview

#### Sponsored Full Time

Same as for M.Tech. part time requirements and sponsorship certificate from the employer as per Note\* 5.

#### Selection Basis:

Written test and /or interview

## M.DES.

### Minimum Eligibility for Admission :

Full Time

B.E./B.Tech./B.Des./B.Arch./B.F.A. (4-year duration)/B.V.A. (4-year duration) M.Sc./M.A. or equivalent in relevant field with CGPA 6.00 on a 10-point scale or 60% marks in aggregate and a valid CEED score.

Selection Basis:

CEED and Interview

## M.B.A.

### Minimum Eligibility for Admission :

Full Time

#### MBA

Bachelor's degree or equivalent (Minimum 3 years after 10+2) with CGPA of 6.00 on a 10 point scale or 60% marks in aggregate for General/OBC (Non Creamy Layer)/EWS Category with valid CAT score.

Selection Basis:

Personal Interview

#### MBA in Telecommunication Systems Management

Bachelor's degree in Engineering/Technology Architecture/Pharmacy/B.Sc. Agriculture Engineering (Minimum 4 year after 10+2) or Bachelor's degree in any branch of Physical/Chemical/Mathematical Sciences like Physics/Chemistry/Mathematics Statistics/Computer Application/Electronics Sciences /Environmental Science or Computational/Information Science /Agriculture or Bachelor's degree in Commerce/Economics/CA/ICWA with CGPA of 6.00 on a 10 point scale or 60% marks in aggregate for General/OBC (Non Creamy Layer)/EWS Category with valid CAT score.

Selection Basis:

Personal Interview

## Part Time

### Executive MBA (Classes in Evening)

- Bachelor's degree or equivalent (Minimum 3 years after 10+2) with CGPA of 6.00 on a 10-point scale or 60% marks in aggregate for General/OBC (Non Creamy Layer)/EWS Category.
- A minimum of 3 years of work experience.

Selection Basis:

Written test and /or Interview

## M.A. IN CULTURE, SOCIETY, THOUGHT

### Minimum Eligibility for Admission :

Full Time

- Graduates with B.A. degree in any discipline: At least 55%\* aggregate marks or 5.5 CGPA/CPI on a 10-points scale.
- Graduates of all other streams (e.g., B.Tech., B.Sc., B.Com., B.Des., B.Ed.): First division or equivalent CGPA/CPI on a 10-points scale.
- Qualifying degree performance is computed by aggregating performance over all the semesters/years of the qualifying degree taking into account all subjects including languages and subsidiaries, all years combined).

Selection Basis:

Performance in written test/GATE Score in any XH subject and, or Interview.

## M.S.(R.)

### Minimum Eligibility for Admission :

Full Time/Part Time and Sponsored

- For the currently registered students in Centrally Funded Technical Institutes (CFTIs) having CGPA of 8.0 or above (on a 10 point scale) at the end of 6th semester or later, in B.Tech./B.E./Integrated M.Tech./Integrated M.Sc. programmes (or any other programme of minimum four years duration, admission to which is on the basis of JEE), the requirement of GATE/JEST/ National Examination is waived for consideration of admission the M.S.(R.) programme in IIT Delhi. Moreover, such students must have obtained CGPA of 8.0 or above at the time of graduation (and before they formally register for the M.S.(R.) programme).
- The requirement of GATE/JEST/ National Examination is waived for consideration for admission to the M.S.(R.) programme for all graduated of CFTIs with a B.Tech./B.E./B.S./B.Sc (minimum 4 year in person) Integrated M.Sc. (or any other programme of minimum four years duration, admission to which is on the basis of JEE) with CGPA of 8.0 or above at the time of graduation.

The requirement of GATE/JEST/National Examination is also waived for M.A./ M.Sc. from IITs with CGPA 8.0 or above.

**Selection Basis:**

Same as the Corresponding M.Tech. Requirements

## M.P.P.

**Minimum Eligibility for Admission :**

**Full Time**

Five-year bachelor's degree such as M.B.B.S., B.A. LLB (Hon.), B.Arch. or equivalent; four-year bachelor's degree such as B.Tech., B.Sc. (Ag.), B.V.Sc., or equivalent; postgraduate degrees such as M.A., M.Sc., M.Phil., Integrated M.Sc./M.A., M.Tech. or equivalent with 60% or 6.00 CGPA on a 10-point scale.

**Selection Basis:**

Written test and/or Interview

## PH.D.

### Minimum Eligibility for Admission :

#### Full Time

Master Degree in Engineering/Technology or Master degree in Science/Humanities/History or equivalent in relevant discipline with CGPA 6.00 on 10 point scale or 60% marks in aggregate for General/OBC/EWS category.

Full time students who do not possess M.Tech. or equivalent degree are required to have a valid GATE/JEST/CEED\* Score or UGC/CSIR/DBT/ICMR/INSPIRE/DST/NBHM fellowship examination.

OR

B.Tech./ B.S./ B.Sc (minimum 4 year in person) or equivalent with CGPA of 7.0 on a 10 point scale or 70% aggregate marks and qualified GATE/JEST or UGC/CSIR/DBT/ICMR/INSPIRE/DST/NBHM fellowship. For Biomedical Engg., candidates having M.B.B.S. with 60% marks or more are eligible provided they have qualified ICMR. The Candidates having Postgraduate degree of Doctor of Medicine (MD)/Master in Surgery (MS) with 60% marks or more after MBBS will also be eligible for admission to Ph.D. Programme in CBME.

- For the currently registered students in Centrally Funded Technical Institutes (CFTIs) having CGPA of 8.0 or above (on a 10 point scale) who are in final semester/year, in B.Tech./B.E./Integrated M.Tech./Integrated M.Sc. programmes (or any other programme of minimum four years duration, admission to which is on the basis of JEE), the requirement of GATE/ National Examination is waived for consideration of admission the Ph.D. programme in IIT Delhi. Moreover, such students must have obtained CGPA of 8.0 or above at the time of graduation (and before they formally register for the Ph.D. programme).

- The requirement of GATE/JEST/National Examination is waived for consideration for admission to the Ph.D. programme for all graduates of CFTIs with B.Tech./B.E./B.S./B.Sc. (minimum 4 year in person) Integrated M.Sc. (or any other programme of minimum four years duration, admission to which is on the basis of JEE) with CGPA of 8.0 or above at the time of graduation.
- The requirement of GATE/JEST/ National Examination is also waived for MA or M.Sc. graduated from IITs with CGPA 8.0 or above.

**Selection Basis:**

Written test and / or Interview

**Part Time**

Same as for Ph.D. full time and minimum experience (as per table 3.5-1) and No Objection Certificate from the employer.

**Selection Basis:**

Written test and / or Interview

**Sponsored Full Time or Part Time**

Same as for Ph.D. full time and certificate from employer (as per Note 8.) No GATE / JEST/ National examination required (Note\*11)

**Selection Basis:**

Written test and / or Interview

**Part Time Foreign National posted in Delhi**

Same as for full-time Subject to conditions stipulated in Note\* 12.

**Selection Basis:**

Written test and / or Interview

## JOINT PH.D.

### Minimum Eligibility for Admission :

#### PMRF

Under the Prime Minister's Research Fellowship (PMRF) Scheme, certain number of fellowship are allocated to the Institute. While PMRF fellows are governed by the same academic rules as any other research scholar, the selection of PMRF fellows is through a centralized process across all IITs/IISc. (For more details, please visit: <https://pmrf.in/>)

#### Selection Basis:

Written test and / or Interview

#### IITD - QU Joint Ph.D.

For admission in QU and IITD joint Ph.D. programme. (please visit: <https://uqiitd.org/>)

#### Selection Basis:

Written test and / or Interview

#### IITD - NYCU Joint Ph.D.

Under this programme, each Institute would admit students to its home Institute as per their own criteria. Students would have to apply for admission to the host Institute when they have identified Co-Supervisor. Host Institute will select as per its own criterion. The students apply to the host Institute for admission within 12 months of their admission to the home Institute.

#### IITD-Sorbonne University Joint Ph.D. Programme in the Area of Health Care.

#### Selection Basis:

Written test and / or Interview

## NOTES:

- 15% seats are reserved for SC candidates, 7.5% for ST candidates, 27% for OBC (non-creamy layer) candidates and 10% for EWS candidates.
- For SC, ST and PwD candidates, relaxation of 5% marks or 0.5 CGPA (on ten point scale) in the qualifying degree will be provided. Relaxation in CGPA to 5.50 or in marks to 55% in the minimum qualifying criteria may be permitted to those General/OBC/EWS candidates who possess M.A. Degree in English for admission to Ph.D. programme in the department of humanities & social sciences.
- 5% of the seats allocated for full-time students, excluding sponsored students, students drawing assistantship from other sources and foreign students, are reserved for Persons with Disability (PwD) for admission to various Postgraduate Programmes. The candidates selected against the quota for PwD be placed in the appropriate category viz. SC/ST/OBC/EWS/General Candidates depending upon the category to which they belong.
- No Objection Certificate should state that the candidate is permitted to pursue studies on part time basis and they will not be transferred to any other place during the period of study.
- Sponsorship letter (on letterhead of the sponsoring organization) should state that period of study will be treated as on duty with usual salary/allowances and they would be fully relieved and granted study leave for the period of studies.
- For executive MBA programme, the classes are held in the evening.
- Candidates with AMIE/grad. IETE fulfilling the minimum eligibility criteria can be considered for admission as visiting students for completing 24 earned credits of undergraduate courses as prescribed by the respective programme after which they have to appear for GATE and apply afresh for admission to M.Tech. programme.
- Part-time candidates are required to submit a "No Objection Certificate" (NOC) on a proper letterhead from the appropriate authority in the organization clearly stating the following:
  - The candidate is permitted to pursue studies on a part-time basis;
  - They will be fully relieved from duty and permitted to reside at the Institute for the period of required residency that is essential for completing the course work (this is not a requirement for candidates who are working in NCR or organizations located within a distance of 50 km from the Institute)
  - That their official duties permit them to attend required classes as per the Time Table of IIT Delhi;
  - That their official duties permit them to devote sufficient time for research;
  - facilities for research in the candidate's field of research are available at the candidate's place of work, in case the proposed Ph.D. research plan requires them to use these facilities when the candidate is physically present at this place of work.
- Full-time applicants coming on study leave must show proof of at least 3 years (2 years in the case of M.Tech. degree holders) study leave when appearing for the interview.

10. CGPA is Cumulative Grade Point Average. For the purpose of admission at IIT Delhi, the conversion factor of 10 would be used for converting percentage to CGPA (divide by 10). However, this conversion to CGPA will only be applied in case of the primary method of evaluation followed in the graduating institution of the candidate seeking admission is percentage marks.

For CGPA with scales of other points, a linear interpolation will be used i.e.

$$G = G_x * 10 / X$$

Where G is the GPA on 10 points scale and  $G_x$  is the GPA on 'x' point scale. Conversions worked out using the above formula for some scales are given in the following table:

Percentage	CGPA 10	CGPA 9	CGPA 6	CGPA 4
50	5	4.5	3	2
55	5.5	4.95	3.3	2.2
60	6	5.4	3.6	2.4
70	7	6.3	4.2	2.8
75	7.5	6.75	4.5	3
80	8	7.2	4.8	3.2
90	9	8.1	5.4	3.6

The minimum prescribed 60/55/50% marks in aggregate (of all the years / Semesters of the qualifying examinations) is calculated by IIT Delhi as per the following example:-

	1 <sup>st</sup> Semester	Percentage	2 <sup>nd</sup> Semester	Percentage
1 <sup>st</sup> year	250/400	62.50	290/400	72.50
2 <sup>nd</sup> year	205/400	51.25	280/400	70.00
3 <sup>rd</sup> year	210/400	52.50	350/400	87.50
4 <sup>th</sup> year	240/400	60.00	150/400	75.00
<b>Total</b>	905/1600	%	1070/1600	%

- Aggregate (%) (of all the years/semesters)  $1975 / 3200 = 61.71\%$

11. Sponsored (Full-time)/Part-time candidates are not required to possess GATE/CEED score for admission to postgraduate/Ph.D. programmes.
12. The registration of foreign nationals, posted in Delhi, to Ph.D. Programme on part-time basis can be made on the terms and conditions as under :-

- (i) The admission will be subject to production of research visa for study at IIT Delhi.
- (ii) The candidate should satisfy all the requirement as applicable to part-time scholars.

### 3.5.1 : Experience required for admission to part-time Ph.D. / M.Tech. / M.S.(R.) programmes.

For admission to part-time programme	Qualifications	Work Experience (Post Qualification)
Ph.D.	M.E./M.Tech./M.S.(R)/M.D. or Equivalent	Nil
Ph.D.	B.E./B.Tech./B.S./B.Sc. (minimum 4 year in person) M.Sc./M.A./M.B.A./M.B.B.S. or equivalent, from CFTIs/Central Universities	1 Year
Ph.D.	B.E./B.Tech./B.S./B.Sc. (minimum 4 year in person) M.Sc./M.A./M.B.A./M.B.B.S. or equivalent, and working in IIT Delhi* (Project or Regular) *Through proper channel	1 Year
Ph.D.	B.E./B.Tech./B.S./B.Sc. (minimum 4 year in person) M.Sc./M.A./M.B.A./MBBS or equivalent, from institutions other than CFTIs/Central Universities	2 Year
M.Tech./M.S.(R.)	B.E./B.Tech./B.S./B.Sc. (minimum 4 year in person) M.Sc. or equivalent, from CFTIs/Central Universities	6 Months
M.Tech./M.S.(R.)	B.E./B.Tech./B.S./B.Sc. (minimum 4 year in person) M.Sc. or equivalent, and working in IIT Delhi* (Project or Regular) *Through proper channel	6 Months
M.Tech./M.S.(R.)	B.E./B.Tech./B.S./B.Sc. (minimum 4 year in person) M.Sc. or equivalent from institutions other than CFTIs/Central Universities	1 Year

## 3.6 Medals and Prizes



IIT Delhi also awards numerous medals and prizes to the students on the basis of examination/project and allround performance in sports, co-curricular activities, etc. At present there are over 100 such medals and awards in operation.



## ACADEMIC BANK OF CREDITS (ABC)

The students are required to create their ABC/APAAR Id at National Academic Depository (NAD) using their Aadhar number and it must be shared at the time of registration. Students' semesters grades and Degree will be uploaded at Digi locker.



## FEES PAYABLE BY STUDENTS OF THE ENTRY YEAR 2026

### 5.1 Tuition Fees

Tuition Fees (per semester)		
Programme		Tuition Fee
B.Tech./ B.Des./B.S./Dual degree#		Rs. 1,00,000**
M.Sc./M.A.		Rs. 7,500
M.Tech./ M.S.(R.)/ M.Des./ M.P.P. (Receiving Institute / Project Assistantship or Teaching position holders)		Rs. 17,500
M.Tech./ M.S.(R.)/M.P.P./PG DIIT (Sponsored, FT/PT & Non - Teaching position holders)		Rs. 75,000
Ph.D. (Full Time)		Rs. 7,500
Ph.D. (Part Time / Sponsored)		Rs. 17,500
M.B.A. Self-financing	Full Time	Rs. 3,00,000
	Part Time	Rs. 4,50,000
Foreign National@	SAARC Countries	US\$ 1,000
	Non SAARC Countries	US\$ 2,000
B.Tech./ B.Des./B.S./Dual Degree		

@The fee for the foreign nationals joining PG/Ph.D. programme will be at par with Indian students.

# The tuition fee in 9<sup>th</sup> semesters and later will be Rs. 17,500/- per semester for Dual-degree programmes.

\*\* 1/3rd of tuition fee for student with family income between Rs.1 Lakh to Rs. 5 Lakh per annum. Other students (other than SC, ST & PwD) whose family income is less than Rs.1 Lakh per annum will get 100% tuition fee exemption.

## 5.2 Other Charges

To be paid every semester along with tuition fee

### A) Institute Fees

Examination fees	Rs. 1,500
Registration / Enrolment fees	Rs. 750
Gymkhana	Rs. 1,250
Medical fees*	Rs. 750
Internet and computer access fee	Rs. 1,000
Transport charges	Rs. 100
Student distress fund scheme (each semester)	Rs. 400
<b>Total</b>	Rs. 5,750

### B) Yearly Payments

Insurance Scheme (yearly)	Rs. 500
<b>Total</b>	Rs. 500

**One Time payment to be paid at the time of admission**

### C) Non Refundable

Admission fees	Rs. 2,000
Student welfare fund	Rs. 750
Modernization fees	Rs. 1,500
Benevolent fund	Rs. 400
Alumni fees	Rs. 2,000
Training and placement charges	Rs. 1,500
<b>Total</b>	Rs. 8,150

\* Medical fee are applicable to full time students only.

### D) Refundable

Institution security deposit	Rs. 4,000
Library security deposit	Rs. 4,000
<b>Total fees payable at the time of admission</b>	Rs. 8,000

## NOTES:

1. In addition to the above, hostel residents are required to pay hostel related charges including hostel seat rent@ Rs. 8,600/-(non-refundable) each semester.
2. Thesis fee for M.S.(R.) and Ph.D. is Rs. 500/- and Rs. 5,000/- respectively and shall be payable at the time of submission of thesis.
3. All SC, ST & PwD students will get 100 % tuition fee exemption.
4. Hostel is available only to full time students, subject to availability.
5. Messing and electricity charges will be calculated on completion of each semester and will be notified separately.
6. To avail various financial benefits, students are advised to upload valid parental income documents on scorner portal.

### Foreign National Visiting Students

Following are the tuition fees per semester, charge able from self-financing foreign national students including those seeking admission as visiting students :

- i. US \$ 1,000 for SAARC Countries.
- ii. US \$ 2,000 for other Countries.

### 5.3 Mode of Payment

A. Institute dues: All Institute dues are to be paid online through ERP/State Bank of India (SBI) I-collect facility.

Payment by challan slip is allowed only to the following:

- i. Students who have taken loan from a bank (for educational purposes), or
- ii. Students who are holders of a scholarship from outside sources who directly send cheque(s) for fees in the name of the Institute.

B. Mess dues: Payment portal for payment of hostel mess fees:-

Please click on the following URL - <https://ecampus.iitd.ac.in/scorner/login>

## 5.4 Deadlines for Payment

### A. Institute dues:

- i. All Institute dues are to be paid in full before the last date for late registration (this is typically one week after the first day of classes).
- ii. Students who do not pay the required amount by this date, or those who make partial payments, shall have their registration cancelled. Registration will be restored on payment of fees and a fine as stipulated in the Institute rules.
- iii. In case of new entrants, the fees are to be paid on the day of registration at the time of joining the Institute.

### B. Mess dues: All mess dues are to be paid on or before the allotment of hostels.

## 5.5 Refund of Fees

In case, student withdraws the admission due to any reason, refund of fees will be as under:

<b>Admission Timeline</b>	<b>Last date for Applying for Refund of Fee for 1<sup>st</sup> Sem. 2026-27</b>	<b>Amount to be Refunded</b>
For admission accepted before 3 <sup>rd</sup> July 2026	On or before 3 <sup>rd</sup> July 2026	Fee paid less Rs. 1000/- (Processing fee)
	4 <sup>th</sup> July to 17 <sup>th</sup> July 2026	Security money less Rs. 1000/- (Processing fee)
For admission accepted from 4 <sup>th</sup> July 2026 to 17 <sup>th</sup> July 2026	On or before 17 <sup>th</sup> July 2026	Fee paid less Rs. 1000/- (Processing fee)
	After 17 <sup>th</sup> July 2026	Security money less Rs. 1000/- (Processing fee)



## STUDENT AFFAIRS

The ambience in the campus and a variety of activities (both co- and extra-curricular) provide an invigorating and creative environment towards a holistic educational experience at IIT Delhi.

Student life at IIT Delhi emphasizes on the importance of working in teams while giving equal importance to the development of independent thinking. Values such as tolerance and respect for diversity are at the core of all interactions. All students enjoy the freedom to develop and nurture their interests – responsible utilization of this freedom is an aspect they learn, and this serves them throughout their lives.

Accommodation that can be offered to students on the campus is limited. However, all students, regardless of whether they reside in the campus or not, have ample opportunities to participate in co- and extra- curricular activities, including access to state-of-the-art academic laboratories, sports, and games facilities, as well as other recreational avenues available on campus. Thus, severe constraints on the available in-campus accommodation that do not allow all students to be offered in-campus residence, do not inhibit their exploration of various interests at IIT Delhi.

Special efforts are also made to promote and strengthen student-teacher interaction. Specific mechanisms are set along with counselling services to assist and support students in their initial and regular adjustments; to deal with any difficulties, they may have during their stay at the Institute.

**The pace and mode of student life in the IIT Delhi campus is planned, implemented, and supported by the following student bodies:**

## 6.1 Student Affairs Council (SAC) and its Five Boards:

The student affairs council is a joint student-faculty senate committee to deal with overall policy formulation, coordination, and review of student affairs, which are of non-academic nature.

The SAC co-ordinates the activities of the various student organizations, viz., Boards for Recreational and Creative Activities, Sports, Hostel Management, Students Publications and Student Welfare. It also works to promote the student interests and endeavors to create healthy traditions in campus life. for more details please visit : <https://sac.iitd.ac.in/>



### 6.1.1 Board for Hostel Management (BHM)

The board for hostel management is responsible for policy formulation, coordination, and review of all matters relating to the management of the halls of residence. It implements and manages all decisions, rules and regulations laid down from time to time by the student affairs council and the authorities of the Institute.



### 6.1.2 Board for Recreational and Creative Activities (BRCA)

The BRCA is the one-stop destination to get away with college stress and indulge in various recreational and creative activities. It gives a platform to nurture and showcase one's talent in co-curricular hobbies. The Showstopper is Rendezvous, our own cultural fest (one of the largest cultural festivals in India) which sees glamorous pro-nites and competitions on a national level.



The board has a plethora of clubs serving the needs of the diverse IIT Delhi community:

**Fine Arts and Crafts Club, Hindi Samiti, Music Club, Wellness Club, Debating Club, Dance Club, Photography and Films Club, Quizzing Club, Literary Club, Dramatics Club, Design Club, Fashion Club, SPIC MACAY.**

### 6.1.3 Board for Sports Activities (BSA)



Sports and games are essential components of human resource development and help in promoting good health and spirit of healthy competition, which, in turn, has a positive and deep impact on the holistic development of personality of the Youth- a potential source of energy, enthusiasm and inspiration. The Board for Sports Activities (BSA) had been looking after this important component for the development of the sports environment on the campus. It ensures that adequate facilities are given to sportspersons.



Some of our facilities are- a cricket field with four turf wickets, four flood-lit cricket practice pitches, flood-lit hockey and football grounds, three flood-lit volleyball and two basketball courts, eight flood-lit tennis courts (four synthetic and four clay courts), tennis practice wall, two squash courts, one badminton hall, two table tennis halls with synthetic flooring, one weight-lifting hall, Olympic size swimming pool, kid's pool, two multi-gyms, a flood-lit stadium with 400 meters athletics track, flood-lit jogging track and ancillary arrangements for all the games.

There is a newly constructed multipurpose hall with facilities for badminton, table tennis and squash courts.

### 6.1.4 Board for Student Publications (BSP)

The board for student publications covers the viewpoint of the student community in various aspects. It encourages creativity and expression among the students. It's a platform which brings awareness and allows thought-provoking discussions on pertinent issues. It publishes journalistic analyses, holds a book fair, and organizes various competitions throughout the year.

Every year, - the signature literati festival is celebrated by BSP. Several speakers from the media, activism and writing space are invited to the festival.



### **6.1.5 Board for Student Welfare (BSW)**

The board for student welfare, IIT Delhi, is a student body set up with the intention to look after the welfare of the student community. BSW has always been dedicated towards helping the Student Community in every aspect of life in IIT Delhi. The board adheres to a principle of making itself the organization of the students, for the students, and by the students.

BSW broadly runs two verticals under it: Mentorship and Operations.

Mentorship covers all mentoring facilities for freshers. Operations cover the well-being of students, mental health support and some events organized throughout the year.

### **6.2 Counselling Services (CS)**

Counselling services support the students to enhance their efficiency and output to perform better and to cope with various distresses.

Counselling involves therapies based on cognitive, behavioral, rational, emotive, supportive, existential, and interpersonal and intrapersonal and personality domains of an individual.

### **6.3 Student-Teacher Interaction Council (STIC)**

STIC (Student-Teacher Interaction Council) facilitates the organization of interactions between individual faculty and students enrolled in their respective courses. Also, many departments organize other events involving all their students and faculty for various courses. Every hostel also organizes an annual “STIC Dinner” that provides an informal avenue for outside-the-classroom interactions between students and their teachers.



## 6.7 Co-curricular and Academic Interaction Council (CAIC)

The council is a joint committee of undergraduate students, postgraduate students and faculty which aims at maximal interaction between students and faculty, a good academic atmosphere and an efficient decision-making process based on consultation; and through these it aims to promote an overall development of students for the maximum realization of their potential. They provide feedback on all academic and allied matters. CAIC has following constituent clubs and societies:

**Robotics Club, Axlr8r Formula Racing Club, Aero-modelling Club, Physics and Astronomy Club, Devclub, Economics Club, iGem- Club, Electrical engineering society, Mathematics Society.** For more details please visit : <https://caic.iitd.ac.in/>

## 6.8 Hostel Accommodation and Charges

One important part of student life in IIT Delhi is hostels. The hostels on the campus are run and managed by the **Board for Hostel Management (BHM)**.

Owing to the rapid growth in student strength in recent years, with a limited number of hostels on the campus, we are facing shortage of campus accommodation.

Due to this, only a limited number of students can be accommodated on the campus, mostly on a sharing basis only. Specifically for PG male students, the earliest possibility of having a chance of allotment of hostel accommodation, on sharing basis and based on availability, is at least after two semesters (that too is not guaranteed).

It may be noted that students may explore private outside-campus accommodations available within walking distance of the campus. While a list of some of these may be made available by the Student Affairs Section, interaction between students and providers of these accommodations are strictly personal (i.e., without any involvement of IIT Delhi in any form).

IIT Delhi campus has a total of 12 boys' hostels, 4 girls' hostels and 1 transit accommodation (for girls) to accommodate its undergraduate and post-graduate (including Ph.D. scholars) full-time.

### The Hostels are-

**Boys Hostel:** Nilgiri, Karakoram, Aravali, Jwalamukhi, Satpura, Zanskar, Kumaon, Vindiyachal, Shivalik, Girnar, Udaigiri and Dronagiri (new)

**Girls Hostel:** Kailash, Himadri, Sahyadiri (new), Saptagiri (new) and Nalanda (transit)

With a student population of ~13000, only ~7000 hostel seats are available (several on sharing basis only; please see the following link – [https://bhm.iitd.ac.in/static/media/Hostel\\_Accommodation\\_IITD.66923f5fb816b23af9cc.pdf](https://bhm.iitd.ac.in/static/media/Hostel_Accommodation_IITD.66923f5fb816b23af9cc.pdf))

Since hostel accommodation cannot be made available to every student, allotment of seats in hostels is done via a transparent process based on implementation of a clearly defined Institute policy. As and when hostel seats become available, the above transparent process is followed, starting with an open announcement to all students. Exceptions cannot be created in the hostel allotment process.

Details about hostel charges applicable from Sem 1, 2026-2027 onwards, are available below.

#### ONE-TIME CHARGES (for every fresh allotment)

S. No.	Category	Charges (INR)
A.	<b>BHM Deposits (one-time)</b>	
	Seat allotment charges (Non-refundable)	<b>7,000/-</b>
	Security (Refundable)	<b>15,000/-</b>

#### PER-SEMESTER CHARGES (for Semester-1, 2026-27)

*(No pro-rata applicable due to hostel operations being fully cooperative in nature)*

B.	<b>*Hostel Mess Charges</b> <i>(Include food, kitchen consumables, human resources, IGL and associated costs)</i>	<b>*36,000/-</b>
	1. <b>Old Hostels</b>	
	2. <b>Nalanda (Transit Accommodation)</b> <i>- Messing, Boarding and Lodging Charges</i>	
3.	<b>New Hostels</b>	
C.	<b>** Centralized AC charges</b> <i>(Applicable for all residents in new hostels; irrespective of program/entry year)</i>	
1.	<b>New Hostels</b>	<b>15,000/- (Single Occupancy)</b> <b>7,500/- (Double Occupancy)</b>

\*The charges for mess are tentative based on expenditures incurred during previous semesters (including estimates provided by the infrastructure unit) and may vary as per actuals – these actuals are calculated only at the end of semesters. The charges are also subject to revision from time to time (e.g., depending on IGL rates, revision of minimum wages by the Government etc.). At the end of the semester, any excess charge paid by the students in a semester will be adjusted towards the charges to be paid for the next semester, i.e., the amount to be paid by students in the next semester will be reduced by any excess charges paid by student in the previous semester. Any student leaving/vacating the hostel permanently (due to termination, or due to completion of academic requirements at IIT Delhi or due to exceptional personal circumstances after proper communication and permissions from competent authority) is refunded the excess amount paid in their bank account after duly submitting requisite form(s) with required information.

\*\* For the new Hostels, i.e., Dronagiri, Saptagiri and Sahyadri having A/C facility, the centralized A/C charges are applicable. These charges are subject to revision from time to time as communicated by the infrastructure unit

Please note that these hostels are available only for PG students (including P.hD., excluding M.Sc./M.A. and Dual Degree). For more information, please visit <https://home.iitd.ac.in/hall-of-residence.php>

**Please note:** From Semester-1, 2026-27 onwards, Hostel Seat Rent/Institute Residence Fee, needs to be paid in the Institute's Main Account. Please refer academic fee circular for details.

**Please note:** It is NOT compulsory to avail hostel accommodation at IIT Delhi, if it is offered.

The transparent hostel allotment process does not have any provisions to hand-pick/choose any particular hostel/seat.

Other information related to hostel accommodation is available at-

(a) <https://home.iitd.ac.in/hostel-rules.php>

(b) <https://bhm.iitd.ac.in/resources/>

For any other information, you may contact Office of Dean (Student Affairs) or write to [adhm@admin.iitd.ac.in](mailto:adhm@admin.iitd.ac.in)

## 6.9 Diversity & Inclusion

The office of diversity and inclusion, guided by the dean of diversity and inclusion, focuses on four key areas of exclusion: gender, sexuality, disability, and caste.

Our mission is to foster an inclusive and accessible environment at IIT Delhi, where diversity is celebrated and valued. We aim to sensitise, advocate for, and recommend policies that create equitable spaces in academia, infrastructure, and extracurricular activities. Our dedicated team, comprising staff, student volunteers, and faculty advisors, works relentlessly to achieve these objectives.

### ODI Functions and Operates Through Four key Verticals

**Initiative for Caste Equity (ICE):** Focuses on educating the IIT Delhi community about caste equity. It arranges various programs, discussions, and seminars to address caste discrimination and privilege. ICE provides tailored support for SC/ST students, including placement preparation and activities to promote caste awareness.

**Initiative for Gender Equity and Sensitisation (IGES):** IGES is dedicated to creating a safe and inclusive campus for all. It offers a confidential platform for addressing gender and sexuality-related concerns and works to promote gender awareness through events. IGES also collaborates with various departments to recommend policies and practices that are gender-inclusive.

**Indradhanu (LGBTQIA+ Collective):** Indradhanu, the LGBTQIA+ collective at IIT Delhi, aims to create a supportive space for gender and sexual minorities. It organises awareness programs, dialogues, and social events and has been pivotal in mainstreaming LGBTQIA+ rights on campus. The collective's notable achievements include hosting India's first LGBTQIA+ pride festival, Vibhinn, at IIT Delhi in 2023 and further editions every year.

**Office of Accessible Education (OAE):** Ensures an inclusive environment for students with disabilities by organising disability awareness workshops, installing Braille signage, ensuring accessible campus infrastructure, promoting inclusive hiring, and offering technical courses tailored for visually impaired students. A range of assistive aids is available to support the diverse needs of students with disabilities. Teaching material is made available in accessible formats. Reasonable accommodations in courses and for assessments are provided as and where possible. OAE also offers free rides to students with disabilities to help them move around campus more easily.

### Key Programs and Initiatives

- **The Transformative Leadership in STEMM Summit (TLS) Workshop:** A flagship program where IIT Delhi invites advanced Ph.D. scholars from SC/ST communities nationwide for a workshop focusing on building faculty. Focus is not just on academic sessions but also on overall career skills such as grant writing, publishing, and job applications.
- **Nishaan:** A cultural program designed to celebrate and support students with disabilities through performances and creative expression.
- **Sangam:** A sports festival and event dedicated to promoting physical activity and inclusion for students with disabilities.
- **Outreach Programs:** Women alums connect with current students, sharing their experiences and offering guidance through mentorship programs that build valuable networks.
- **Lactation/Feeding Rooms:** Dedicated spaces on campus for breastfeeding and pumping, supporting new mothers.
- **Sensitisation Workshops:** Training sessions for students, faculty, and staff to foster inclusive practices.
- **English Language Bootcamp:** Enabling students from diverse backgrounds to build proficiency for effective comprehension and communication.

## **Diversity and Accessibility Representatives**

**Diversity Representatives:** Each hostel has student representatives to promote inclusive practices and serve as a point of contact for ODI initiatives.

**Accessibility Representatives:** Faculty representatives are designated in each department to provide support to students, staff, and faculty members in matters of accessibility and inclusion.

### **How to Engage with ODI?**

Students, faculty, and staff can participate in ODI programs, join working groups, or seek support by reaching out through our official communication channels. We encourage collaboration and active engagement to build a truly inclusive campus.

## **6.10 Alumni Relations**

The office of alumni relations at IIT delhi fosters and maintains enduring relationships between the Institute and its global network of over 65,000 graduates. The office serves as the primary point of contact for this vibrant community of professionals who hold a strong sense of pride in their alma mater. Alumni play an integral role in the Institute's endeavours, offering valuable insights, time and financial support to help IIT delhi achieve new milestones and address future challenges effectively.

The office of alumni relations is dedicated to recognising and honouring the contributions of alumni through the organisation of distinguished alumni awards. It aims to foster ongoing intellectual engagement with alumni, facilitate fundraising initiatives, and support the implementation of alumni-funded projects and activities. Additionally, the office oversees the dissemination of the Institute's news and activities via newsletters, coordinates alumni reunions and various events. It is worth noting that many faculty members are also alumni of the Institute.

### **IIT Delhi Endowment Office**

Since its inception in 2019, the IIT Delhi endowment has experienced significant growth and now encompasses over 150 varied funds dedicated to promoting student achievements, advancing faculty research, and developing infrastructure.

The IIT delhi Endowment is instrumental in ensuring the long-term success and sustainability of the Institute. It establishes a resilient financial foundation, supporting strategic planning and enabling the pursuit of ambitious initiatives with reduced reliance on government or internal funding. This approach fosters innovation, infrastructure development and advanced research, maintaining IIT delhi's position at the forefront of academic excellence.

The endowment supports the Institute's development, fosters innovation and entrepreneurship, and enhances IIT delhi's teaching and research to internationally recognised standards.

The endowment fund serves as a symbol of steadfast support for IIT Delhi, reflecting a collective commitment to shaping future generations and promoting the advancement of knowledge. It nurtures brilliant minds by covering essential educational expenses, be it tuition or housing ensuring that no talented student is held back by financial barriers. Beyond this it enhances campus facilities, new infrastructure and funds groundbreaking research on global challenges. It is a response to the immediate needs of our institution, driven by a shared belief in the transformative power of education and innovation.

Many generous donors choose to dedicate their contributions to specific causes close to them, like particular schools, programmes, or activities imprinting their legacy onto this noble endeavour. Currently, over 60% of the endowment fund is allocated for these targeted purposes, ensuring that every penny entrusted to us reaches the places where it can make the greatest difference, exactly as our donors envision.

Our flexible, unrestricted endowment fund, amounting to approximately 200 crore rupees, represents around 40% of the total and provides us with the vital freedom to respond agilely to the institute's evolving needs. Contributions from countless generations have been instrumental in the growth of IIT Delhi whether through dedicated support for specific projects or generous, unrestricted donations that empower us to act swiftly and wisely. Together, we are forging a legacy rooted in passion, purpose, and unwavering belief in the boundless potential of every student and faculty member.

### **6.11 Conduct and Discipline**

A student shall conform to a high standard of discipline and shall conduct himself, within and outside the precincts of the Institute, in a manner befitting the students of an Institution of national importance. He / she shall have the seriousness of purpose and shall in every way, train himself to lead a life of earnest endeavor and co-operation. He / she must follow strict ethical standards. Under no circumstances he/she will adopt unfair means for completing any component of evaluation in a course. He shall show due courtesy and consideration to the employees of the Institute and Halls of Residence, good neighbourliness to his fellow students, respect to the Wardens of the Halls of Residence and the teachers of the Institute and pay due attention and courtesy to visitors.

### **6.12 Honour Code**

In order to promote ethical behaviour, the Institute requires every student to agree to abide by the Honour Code. At the time of admission, every student has to sign the Honour Code and submit a copy to the respective academic section. Violations of this Code are taken very seriously and may result in suspension or expulsion. The Honour Code is given on the inside back cover of this document.

### **6.13 Institute Policy on Ragging**

Ragging is banned in the Institute. If a student is found to have indulged in ragging in the past, or if it is noticed later that he / she has indulged in ragging, then he / she may be expelled from the Institute.

### **6.14 Policy Against Sexual Harassment**

Institute has a policy against sexual harassment and is committed to providing an environment free from sexual harassment of women at the workplace.

## CENTRAL FACILITIES

- **Central Manufacturing Facility**
- **Central Research Facility (CRF) & SATHI**
- **Central Library**
- **Nanoscale Research Facility (NRF)**
- **Career Services (OCS)**
- **Hospital & Health Services**

### 7.1 Central Manufacturing Facility (Formerly Central Workshop)



**CNC Wirecut EDM**

The central manufacturing facility at IIT Delhi is a key facility focused on providing core manufacturing education, conceptually teaching all first-year students how a product is made, while also offering product manufacturing support to the entire institute community, especially undergraduates. It provides practical training in various manufacturing processes, including Metal Casting, Forming, Machining, Welding, CNC programming, 3D Printing, and Plastic Product manufacturing. Annually, over 900 first-year undergraduate students gain hands-on skills here, which introduces them to the art and science of manufacturing and builds confidence for future design and production activities; additionally, it provides specialized training for B.Tech. students in mechanical engineering and production & industrial engineering, and its facilities are utilized by M.Tech. Production Engineering students for practical courses, projects, and research.

The central manufacturing facility caters to the fabrication needs of students across various courses, including product design and manufacturing, minor and B.Tech. projects, Master's theses, and Doctoral research, enabling a large number of students to build products and compete in national and international competitions like Formula student car, mini Baja, and Robocon; additionally, external agencies can utilize the facility for manufacturing and training during vacation periods.



*Welding Lab*



*Abrasive Water Jet Cutting*



*CNC Milling Machine*

The central manufacturing facility consists of 12 different labs covering all areas of manufacturing technology and equipped with both traditional presses and the latest machines like wire cut EDM, Water jet cutting. The facility incorporates a dedicated 3D Printing Laboratory for rapid prototyping, which houses professional-grade additive manufacturing systems and a laser cutting machine. This infrastructure supports students and researchers in the expeditious development of prototypes. The CNC machine laboratory has recently undergone a significant upgrade, incorporating new milling and turning centers alongside advanced CNC simulation tool. This simulator serves as a key teaching tool, enabling the mastery of operational procedures and programming prior to the engagement with the physical machinery. The facility now includes a water jet cutting machine, which provides precise cutting capabilities.

The digital manufacturing laboratory is structured to address the community's electronics requirements. The facility features specialized soldering stations and now includes a new, comprehensive PCB manufacturing unit that enables in-house prototyping. This unit is equipped with several key machines, including an SMT pick and place machine for the precise, automated placement of surface-mount components, an SMT soldering reflow oven for soldering these components with controlled heating profiles, a PCB prototyping machine crucial for quickly creating and testing circuit board designs on-site, and Surface-Mount Technology (SMT) stencil printers, which are essential for accurately applying solder paste to the PCB pads before component placement.

Advancing contemporary manufacturing processes, the facility also features a robotic welding cell utilizing Metal-Inert-Gas (MIG) welding technology. This cell functions not merely as equipment but as a demonstrative realization of key Industry 4.0 concepts.

In addition to its modern facilities, the workshop is fully equipped with designated, necessary, and traditional areas for core mechanical processes such as working with wood, shaping and cutting sheet metal, casting metal in a foundry, and shaping metal through heating and hammering (forging). These dedicated spaces provide a comprehensive and practical learning environment, moving beyond textbooks and theory to bring engineering to life for all participants. They cover both contemporary and time-honored engineering techniques, ensuring hands-on learning.



*CNC Turning Machine*

In addition, the precision manufacturing laboratory focuses on ultra-high-accuracy non-traditional manufacturing processes. Its impressive inventory of advanced EDM technologies includes a CNC Wire Cut EDM, a Smart Drill EDM optimized for minute, deep holes, and a ZNC Die Sinking EDM machine utilized for the fabrication of intricate geometries. This laboratory is also provisioned with an Industrial Digital Light Processing (DLP) 3D printer and a Metal 3D printer, enabling the creation of prototypes and functional components with geometric precision and material integrity.

## 7.2 Central Research Facility (CRF) & SATHI

Central Research Facility (CRF) & SATHI serves as the backbone of an academic institution, offering state-of-the-art analytical and high-end instruments. Managed by highly qualified personnel, the CRF & SATHI provides critical scientific and technical services to faculty, research scholars, and project students, ensuring research efficiency aligns with international standards. To further strengthen its capabilities, IIT Delhi was awarded the SATHI project by DST in 2019.

To enhance its offerings, IIT Delhi has not only upgraded and procured new facilities at the hauz khas main campus but also established an independent building at the sonipat campus. This modern infrastructure houses cutting-edge equipment to support UG/PG students and researchers from academia and industries. Several CRF & SATHI facilities are also open to external academic institutions, research organizations, and industries, fostering collaboration and innovation.

### New Facilities Established facilities

The following facilities have been recently added at CRF-SATHI Hauz Khas and Sonipat Campus:

1. **Cryostat with Superconducting Magnet**
2. **Blue Diode Laser**
3. **HRMS (High-Resolution Mass Spectrometry)**



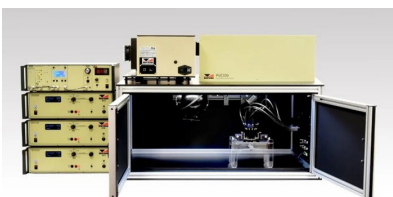
*Blue Diode Laser*



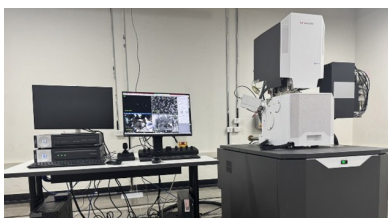
*AFM with Glove Box*



*HRMS Equipment*



*Photovoltaic EQE/IQE System*



*FESEM CL System*



*Single Crystal XRD*

4. **FESEM-Cathodoluminescence**
5. **AFM with Glove Box**
6. **NMR 400 MHz with Liquid & Solid Probe**
7. **Polishing Machine**
8. **High-Intensity X-Ray Diffraction Facility**
9. **Scanning Tunneling Microscope**
10. **200 KV HRTEM**
11. **Dual Beam Plasma FESEM FIB System**
12. **Latest XPS Machine**
13. **Physical Property Measurement System (PPMS) Dyna cool-9**

### **New Funding Initiatives**

The Central Research Facility (CRF) recently secured new funding to acquire heavily used equipment such as **FESEM FIB**, **HRTEM**, and **XPS**. This initiative aims to ensure that these extensively in demand instruments are readily available to all users within the institute, as well as external users, without extended waiting periods.

### **Infrastructural Development**

The new CRF SATHI building at the **Sonipat Campus**, slated for completion this year, will host **23 new laboratories and offices**, supporting the installation of advanced equipment for CRF and SATHI operations.



## Workshops and Events at CRF/SATHI in last one year

Both CRF and SATHI not only offer their services for scientific measurements and analysis, we are also committed to training researchers on the sophisticated facilities. This not only leads to skill development but also allows for optimal use of the facilities by the young researchers. The trainings involve understanding the functioning of the instruments through lectures and tutorials, but most importantly hands-on operation of the facilities engages the users to the maximum extent. In the past year we conducted almost a workshop per month on average, which we plan to double up this year to train even more enthusiasts.

S. No.	Workshop Event	Event Date
1	National workshop on single crystal X-Ray diffraction	8 <sup>th</sup> –9 <sup>th</sup> Jan. 2026
2	SPECTRA 2025	10 <sup>th</sup> –14 <sup>th</sup> Nov. 2025
3	Open House	8 <sup>th</sup> Nov. 2025
4	FUSION-2025	19 <sup>th</sup> –23 <sup>rd</sup> May 2025
5	Hands on training: State-OF-THE -ART analytical tools	29 <sup>th</sup> –30 <sup>th</sup> April 2025
6	Workshop & Hands on training on In situ FTIR	16 <sup>th</sup> April 2025
7	Hands on training : EPMA, TEM, AFM, Raman & ICPMS	5 <sup>th</sup> - 7 <sup>th</sup> March 2025
8	Workshop cum Symposium: Material Characterization & Performance Analysis for Electrolyser and Fuel cell for Green Hydrogen	11 <sup>th</sup> - 12 <sup>th</sup> Feb 2025



Some Photographs from the Event

For more details visit, <https://crf.iitd.ac.in/> and [sathi.iitd.ac.in](https://sathi.iitd.ac.in)

## 7.3 Central Library

The IIT Delhi library system encompasses a central Library and 36 departmental unit libraries, collectively serving over 13,000 registered users, including students, faculty, staff, and alums. The central library features advanced RFID, AI, and ICT-enabled infrastructure, and operates on Koha, an open-source library management system.

The library maintains extensive collections across STEM disciplines, biotechnology, computer science, humanities, social sciences, and management. The library provides comprehensive services, including circulation, document delivery, inter-library loans, institutional repository, discovery services, research support, and remote access to the electronic resources through VPN and Shibboleth-based systems, making resources globally accessible to the institution's Fraternity.



Beyond traditional library functions, the central library has served as a national resource centre for library and information sciences under the Ministry of Education. The library has coordinated ARPIT MOOCs on the SWAYAM platform and is conducting a successful 12-week NPTEL course on “Science Communication: Research Productivity and Data Analytics using Open-Source Software.”

In collaboration with University College London and Scientific Knowledge Services Germany, it offers the certificate course “Focus on Open Science Delhi - Creating a Research Culture for the 21st Century.” The library previously served as the headquarters of the INDEST-AICTE Consortium, a pioneering library consortium initiative in India. Established in August 1961, the central library now occupies about 55,000 square feet across three centrally air-conditioned floors.

### Memberships

All students, faculty, and staff of the Institute are entitled to use the library facilities. Similarly, industrial establishments can avail of library services by taking a corporate membership. Retired teaching and non-teaching staff, as well as alums of the Institute, can also avail themselves of the library facilities.

Membership category and loan privileges are given below:

Category of Member	No. of Books Issued	Duration of Issue
Faculty, Scientific & Academic Staff	12	One Semester
Visiting / Adjunct / Inspire Faculty	06	One Semester
Emeritus Fellow	06	One Semester
Retired Faculty / Staff (With Security deposit of Rs. 15,000/-)	02	One Month
Administrative Staff (equivalent to Asstt. Registrar to and above)	05	One Month
Technical and Supporting Staff	02	One Month
Other Staff of the Institute	02	One Month
IRD Staff (with a minimum one year duration)	02	One Month
Research Scholars (Ph.D.)	08	One Month
Post-Doctoral Fellows	08	One Month
M.Tech./M.Sc./M.B.A. /M.S.(R.)/M.Des/PG Diploma	05	14 Days
B.Tech.	05	14 Days
IITD Alumni	02	14 Days
Corporate Members	02	14 Days
Book Bank Books (B.Tech./B.Des only)	06	Six Months

### Library Hours

The central library remains open throughout the year except for six holidays, namely: Diwali, Dussehra, Holi, Independence Day, Mahatma Gandhi's Birthday and Republic Day.

### Timings:

- **Book Stack Area:** All Working/Weekdays/Saturday/Sunday/Public Holidays (9 AM to 9 PM).
- **Reading Area:** All Working/Weekdays/Saturday/Sunday/Public Holidays (8 AM to 3 AM), 24x7 during exams

## Library Collection

Central library has over 1,95,584 printed books (as of December 2025) covering various subjects including, physical sciences, engineering, technology, biotechnology, computer and information technology, humanities, social sciences, management, and more. The library features a video viewing facility, and a sizable collection of video lectures is available in its computer applications division/lab on the ground floor. In addition to its online resources, it maintains a separate reference collection comprising encyclopedias, dictionaries, handbooks, and bibliographies. It has built a good collection of books in Hindi, including those on various subjects taught and researched at the Institute, as well as general reading books.

The library has a book bank collection that holds multiple copies of selected textbooks, facilitating students' borrowing of up to six books, free for the entire semester. It is a valuable service that supports students in their academic pursuits and helps to reduce the financial burden of purchasing textbooks. For details visit: <https://library.iitd.ac.in/page/about-us/>

## E-Resources and Databases

IIT Delhi has access to over 71,000 full-text electronic journals, 9,300 eBooks, and 2,900 archives. Subscriptions are obtained either directly from publishers or exclusive distributors, or through One Nation One Subscription (ONOS). The library also subscribes to a comprehensive set of ISO, IEC, and ASTM standards, as well as educational software such as Grammarly, QuillBot, EndNote 21, and ChemDraw. The E-Resources subscribed by the central library/IIT Delhi can be accessed anywhere on the campus if one is using the IIT Delhi Internet/IP range. The same is also accessible through remote login from outside the campus to the users. A detailed list of E-Resources is available at: <https://library.iitd.ac.in/divisions/erd/>

## Facilities and Services

central library has been using RFID technology since 2010, facilitating the users: self-check-out, self-check-in (Book Drop), theft control, finding misplaced reading material, sorting, inventory accuracy, stock verification procedures, security control, video surveillance, people counter, etc. The Central Library also features a well-equipped computer lab facility with an internet connection, allowing users

to access electronic resources and conduct their study, research, and academic work. The lab is also being used to host training and workshops, besides giving access to large data sets.

The library has implemented Koha, an Open Source LMS, and has customised the user-centric online public access catalogue, through which you can check the availability of the printed books and your records like Issue/Returns/Overdue Books/Fines, etc. For every transaction, an automatic email is sent to the registered email to avoid misuse of the library card. The Web OPAC (Book Search) is accessible at: <https://libcat.iitd.ac.in>. The library also arranges for the loan of printed books or Journal Articles from other libraries that are not available in IIT Delhi through an Inter-Library Loan. Requests for the same may be sent through email or through the Library Circulation Counter/DELNET.



### Institutional Repository

The institutional repository of IIT Delhi serves as a centralised platform for preserving, disseminating, and showcasing the scholarly output and intellectual creations of our institution. Currently, it provides access to the extended abstracts of Ph.D. theses submitted by the IIT Delhi research scholars and other documents. The institutional repository has been built using DSpace 8 digital repository software, available at <http://ir.iitd.ac.in>. The full text of the theses is accessible via the Shodhganga national repository, a reservoir of Indian theses, at: <https://shodhganga.inflibnet.ac.in/jspui/handle/10603/421373>.

### IITD Faculty Profiling System

The central library, in collaboration with the MoE project IRINS, has developed and launched a customised profiling system of IIT Delhi through which customised data of the institute and its faculty is available in the most presentable form at <https://iitd.irins.org>. It facilitates faculty members in collecting, curating, and showcasing scholarly communication activities, providing an opportunity to create a scholarly network. It has been integrated with academic identities such as ORCID ID, Scopus ID, Google Scholar ID, and CrossRef, among others.

## Chatbot

The central library has developed a Chatbot named “BibDAIL+”, designed to assist library users with basic service queries. It can be accessed through the library’s web OPAC page. The chatbot engages users in real-time conversations, addressing queries related to library hours, book recommendations, and general information. It is equipped to handle basic inquiries, offering a convenient and instant support channel. Visit to access: <https://library.iitd.ac.in/>

## News Clipping Service

The central library has been compiling News Clips on IIT Delhi-related aspects from various e-sources/google alerts, etc. and circulates them among the IIT Delhi user community monthly. The archives are available from 2010 onwards. Website link: <https://library.iitd.ac.in/page/news-clipping/>

## Book Recommendation System

The central library has a flexible book recommendation system in offline and online formats. If you are interested in recommending a book for the Library, whether you are a faculty member, staff member, or student, you may do so by filling out the recommendation form available on the website <https://library.iitd.ac.in/page/bkrecommendation/> The Central Library has developed an online book recommendation system using Koha as well (Open Source LMS), apart from the Institute ERP, to facilitate faculty members. The faculty members can recommend the book(s) for the central library and the departmental libraries concerned through the online system. To access the Koha-based Online Book Recommendation System, click here, or <https://library.iitd.ac.in/page/obrs-new/>, & Use your kerberos ID and password to log in.

## Pathfinder (Subject Bibliographies)

A pathfinder is a bibliography on the author, subject, and known personality, to promote usage and to create awareness among the user community. It lists the various resources available in the central library and helps library users with teaching, learning, and research. Currently, around 50 bibliographies are available in the central library, which can be accessed at: <https://library.iitd.ac.in/>



### IIT Delhi Faculty & Staff Authored Books

The central library is continually developing a separate collection of books authored by IIT Delhi faculty and staff members (Edited books are excluded). It has created a virtual corner for such books on the library website link: <https://library.iitd.ac.in/faculty-author-books/>, and a physical gallery has been created on the first floor of the Central Library (near the circulation desk).

### Take a Book / Give a Book Program

The central library offers a platform, known as take a Book / Give a Book, to promote reading among institute users and enable the reuse of books, including textbooks. We invite users who would like to share their personal copies of books after finishing reading may leave their books on the dedicated Bookshelf located on the first floor of the central library (near the entrance gate). Similarly, feel free to take a book left by another user. For more information, visit: <https://library.iitd.ac.in/page/take-a-book-give-a-book/>

### Research Support Services and Outreach Programs

The Research Support Services and Outreach Program (RSS&OP) section of the central library is dedicated to supporting the academic community: students, faculty, and researchers by making research and learning easier and more impactful. Using Research Information Management (RIM) and a range of library resources, services, and tools, we help at every stage of your academic journey, from discovering new ideas and designing research to creating and sharing your work.

The central library regularly organises author and publishing workshops and helps users get the most out of academic writing and research tools like Grammarly, QuillBot, EndNote 21, online databases, and eBooks. The calendar is available on the library's website to register for a desired event/s. For More visit: <https://library.iitd.ac.in/divisions/rss/>

### Library App

The library mobile App is very useful and can be installed on Android devices from: <https://play.google.com/store/apps/details?id=com.iitd.c>



### QR Code-Based Systems

The central library continuously strives to enhance ease of access for its users. Most library services are now available through QR codes, enabling quick and convenient access. Users can also share their feedback instantly by scanning the relevant QR code. To access library services using QR codes, kindly scan.

### Library Literary and Cultural Club

The library literary and cultural club brings together a vibrant community of readers and creative minds. The literary club offers a welcoming space for book lovers to discover new authors, share insights, and engage in enriching discussions. Complementing this, the cultural club organises diverse cultural engagements and academic tours, etc.

### Best Library User Awards

The central library proposes to institute the best library user awards to encourage students to make effective use of library resources, services, and facilities. The awards will be conferred annually on annual library day & the CLAN Meet in May, and may include a certificate, a book/memento, and a cash prize of ₹5,000 each. One award each is proposed to be given to a Ph.D., Master's, and Bachelor's students, based on measurable and qualitative criteria such as library visits, resource usage, contribution to library development, participation in outreach activities, timely return of books, and discipline. Points accrued during the calendar year will determine selection, and the criteria will be reviewed for subsequent years.

### Links to Library Videos:

Library Tour - <https://youtu.be/bq7McjKg3Jw?si=4YznllD5jGPfyWWY>

IIT Delhi Library on National Television - <https://www.youtube.com/watch?v=GCSU1DOYqbQ>

Orientation Video - <https://www.youtube.com/watch?v=XqTnzmJvPOI&t=1s>



Overall, the Central Library at IIT Delhi plays a crucial role in supporting the Institute's teaching, research, and innovation, and in achieving VISION, MISSION, and VALUES by providing high-quality scholarly information and services.

For further information about the Central Library and its Services, you may visit: <https://library.iitd.ac.in> or download the Library Handbook 2025 <https://library.iitd.ac.in/media/pdf/menu/LibraryHandBook2025.pdf>

## 7.4 Nanoscale Research Facility (NRF)

The Nanoscale Research Facility (NRF) consists of class-100 and class-1000 clean rooms with several state-of-art fabrication/thin film deposition equipment and characterisation facilities. The NRF research program has been focused on both thematic areas of national importance and basic research relevant to the development of nanoscience and nanotechnology. The NRF facility is open round the clock 24×7. More than 200 faculty members from different departments and centres of IIT Delhi are participating in cutting-edge research at the Nanoscale Research Facility. Using the facilities at NRF, several deliverables related to nanophotonics, nanomagnetics, nanomechanics, nanophotovoltaics, nanoelectronics and biosensing have been successfully demonstrated. The current research in NRF is mainly focused on developing nanoscale devices for health, agriculture, safety and the energy sector. The emphasis is on developing micro/nanoscale devices that can be given to users. It is also planned to explore new concepts/strategies for developing future potential nanoscale devices.

### Objective of the NRF

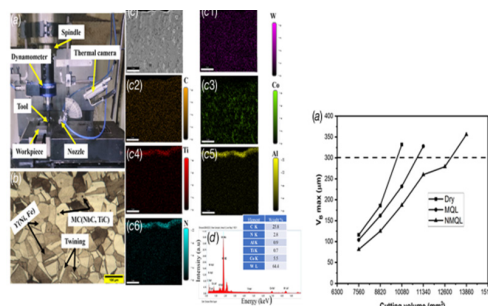
- To design, build and demonstrate nanoscale structures and devices.
- To investigate new concepts and fundamentals for nanoscale processes.
- To run and maintain different fabrication and characterization facilities.
- To provide exposure to students in the area of nanotechnology.

### Facilities available

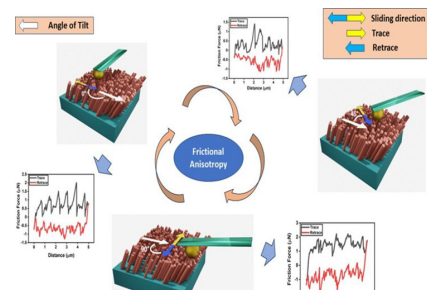
NRF has adequate characterization lab facilities with more than 20 equipment like XRD, SEM, SPV, High Resolution AFM-Raman, PL-Raman, UV-Vis, FTIR, DLS, GCMS, HPLC, AGM, Semiconductor Characterization System, Contact Angle Measurement, Thermal Conductivity and others. There is a fabrication lab (clean room facility: class-100 and class-1000) with Maskless lithography, Mask aligner, Electron Beam Evaporation, Sputtering, Reactive Ion Etching, CVD, Atomic Layer Deposition, Pulse Laser Deposition, Wet Bench, etc. These facilities can be accessed through the online booking system after registration on the NRF website (<https://nano.iitd.ac.in/>). Currently, around 2400 users (faculty members

and students of different departments and centres) of IIT Delhi are registered for access to these facilities. These facilities are also open to the other institutes and industries across the country.

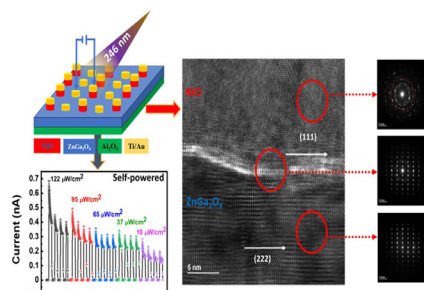
## Research and Achievement



Investigating the wear mechanism of TiAlN/TiN PVD-coated WC inserts in end milling of Incoloy 925 under the synergy of bio-degradable fatty acids and nano-metallic solid lubricant.



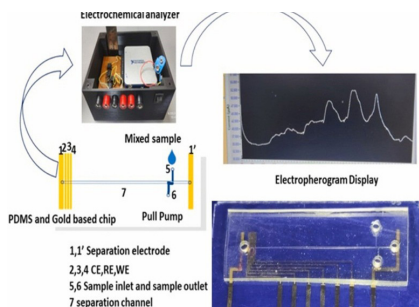
Anisotropic stick-slip frictional surfaces via titania nanorod.



Unveiling superior solar-blind photodetection with a NiO/ZnGa<sub>2</sub>O<sub>4</sub> heterojunction diode.



Spin-selective charge transfer-SERS driven label-free enantioselective discrimination of chiral molecules on Ag nanoparticle-decorated Ni nanorod arrays.



Development and characterisation of a microchip electrophoresis pulsed amperometric detector-based soil pesticide analyser.



Hands-on training program on “Semiconductor Devices for Quantum Applications” was organized at NRF on 21-25 July, 2025. The workshop was conducted under the aegis of the National Quantum Mission (NQM) and sponsored by the QMD Foundation. The program has provided the knowledge related to the fabrication and characterization of advanced quantum-enabled semiconductor devices.



- NRF user’s awareness workshop on the use of the fabrication and characterization facilities was organized at block-6 on 06 Nov. 2025, IIT Delhi. The objective of the workshop was to create awareness for the use of facilities at NRF and broaden the user base of the facility.
- NRF visit was arranged under the CEP program on semiconductor manufacturing technology on 13 Dec., 2025. The visit has provided participants with the first hands-on exposure to semiconductor fabrication processes and cleanroom protocols.
- New Equipments at NRF:- High Resolution AFM-Raman, PECVD, Wet Bench facility, Contact Angle Measurement, Raman-2, Thermal Conductivity, CVD-MoS<sub>2</sub> and CVD-Graphene.
- Number of Patents:- 11

## 7.5 Career Services



The office of career services (OCS) serves as the Institute's central interface with leading organisations across the globe for career services. It is committed to providing students with meaningful industry exposure and facilitating rewarding career opportunities. Through sustained engagement with corporate, research, public sector, and entrepreneurial ecosystems, OCS ensures that students are well-prepared to transition successfully into professional roles.

### Internship Programmes

OCS actively facilitates internship opportunities that enable students to gain practical experience and industry exposure. Students enrolled in B.Tech., B.Des., and Dual Degree programmes (from the second year to the pre-final year) may undertake practical training or internships during the summer vacation period. Subject to the norms of their parent department, such internships may be considered for academic credit toward partial fulfilment of the Design & Practical Experience (DPE) component.

**Summer internship opportunities are also facilitated for pre-final year students of:**

- M.Des. (Master of Design)
- M.Sc. (Cognitive Science)
- M.Sc. (Economics)
- M.Sc. (Mathematics)
- M.Sc. (Physics)
- M.Sc. (Chemistry)
- M.A. (Culture, Society and Thought)
- Master of Public Policy (MPP)

Through structured guidance and institutional support, OCS ensures that students secure internships aligned with their academic background and career aspirations.

## Campus Placement

OCS conducts a dynamic and well-structured campus placement programme for graduating students. Leading national and international organisations are invited to participate in recruitment drives, which include pre-placement talks, selection processes, and interviews conducted on campus or through virtual platforms.

The office also proactively reaches out to new and emerging organisations to broaden opportunities for students and strengthen industry partnerships.

## Career Development and Support Services

In addition to internships and placements, OCS offers a comprehensive range of career development initiatives throughout the academic year. These include lectures, seminars, workshops, and interactive sessions on:

- **Career counselling and planning**
- **Resume and cover letter preparation**
- **Interview techniques**
- **Communication and presentation skills**
- **Professional etiquette and soft skills**

An annual career fair is organised to provide students with direct access to diverse organisations, enabling them to explore career pathways, understand industry expectations, and make informed professional choices.

Through these initiatives, the office of career services plays a pivotal role in shaping the professional trajectories of the Institute's students and fostering strong, enduring industry relationships.

## 7.6 Hospital & Health Services

The Institute Hospital is a 20 bedded well equipped primary health care facility providing OPD treatment and admission for minor medical ailments. Being in the centre of the campus, our patients have easy access to the medical facility. The hospital has an inhouse pharmacy which is open from 8 am to 8 pm providing good quality medicines. The Hospital is managed by a team of full time eight allopathic doctors, one homeopathic doctor, one dental doctor and eight doctors on contract basis through IRD for helping in OPD and emergency services and round the clock duties on all weekdays and holidays providing 24X7 availability of doctors in the emergency. The hospital has a physiotherapy unit, basic composite laboratory with state-of-the-art medical equipment's for diagnosis and one outsourced advanced pathology laboratory. The dental unit is well equipped, and the dental surgeon is managing all dental emergencies including minor oral surgical procedures.



The biomedical waste protocol is followed as per government guidelines. The facility of digital radiography is also available from February 2025. The hospital is also visited by part time specialists from All India Institute of Medical Science (AIIMS) & Safdarjung Hospital in the field of Cardiology, ENT, Orthopaedics, Ophthalmology, Psychiatry, Neurology, Pulmonology, Dermatology, Paediatrics and Ayurvedic on some days of the week as per visiting specialists schedule displayed on the hospital website.

The doctors are assisted by efficient Nurses, Physiotherapist and other Paramedical staff and manage primary emergencies, while serious patients are referred to All India Institute of Medical Science (AIIMS), Safdarjung Hospital (SJH) or IIT empanelled hospitals in two ambulances (One PTA & One BLS) which is available 24X7 on all days. The employees also have facility of health insurance which enables the working and retired beneficiaries to seek all the indoor and surgical treatment in good hospitals covered under the insurance scheme.

All UG and PG students can also avail of Vidyarthi (Group) Mediclaim Insurance Cover policy with M/s National Insurance Co. Ltd.

E-mail ID:- [iitdelhi.helpdesk@vidalhealth.com](mailto:iitdelhi.helpdesk@vidalhealth.com) and see <https://vidalhealthtpa.com/vidalhealthtpa/network-hospital.html>

IIT Delhi Hospital is a recognized centre for pulse polio immunization and was government covid vaccination centre for several months. The hospital provides medical aid during sports meet, Rendezvous, Annual Convocation, other Cultural functions & other events and free educative and health check-up camps for the IIT community. The group A employees also get the facility of annual health checkup at IIT empanelled hospital. The preventive health check-up is done throughout the year for staff as well as students. All new appointments undergo medical examination in the hospital before they join the Institute.

The hospital is pro-active in terms of organisation of health & awareness camps though out the year related to cleanliness, Eye health, BMD screening, Mammography screening & CPR Training.

## INDUSTRIAL RESEARCH AND DEVELOPMENT

The Indian Institute of Technology Delhi (IIT Delhi) plays a transformative role in advancing knowledge and technological innovation through sponsored research and industry collaboration. To support these efforts, the Industrial Research & Development (IRD) Unit was established to provide dedicated administrative and managerial support for sponsored research projects and consultancy assignments, and to strengthen diverse R&D activities.

Over the years, the Institute has built a robust and vibrant research ecosystem by developing state-of-the-art laboratories and promoting innovation through externally and internally funded projects. IIT Delhi is a trusted national partner, actively driving troubleshooting, product and process development, design validation, and complex problem-solving through strategic, time-bound research and consultancy solutions to address national challenges.

The Institute collaborates extensively with leading national and international organisations and universities, fostering meaningful research partnerships and knowledge exchange through faculty and student mobility. The IRD unit continues to support mission-oriented, high-impact projects aligned with national priorities, contributing to technological solutions and tangible societal impact.

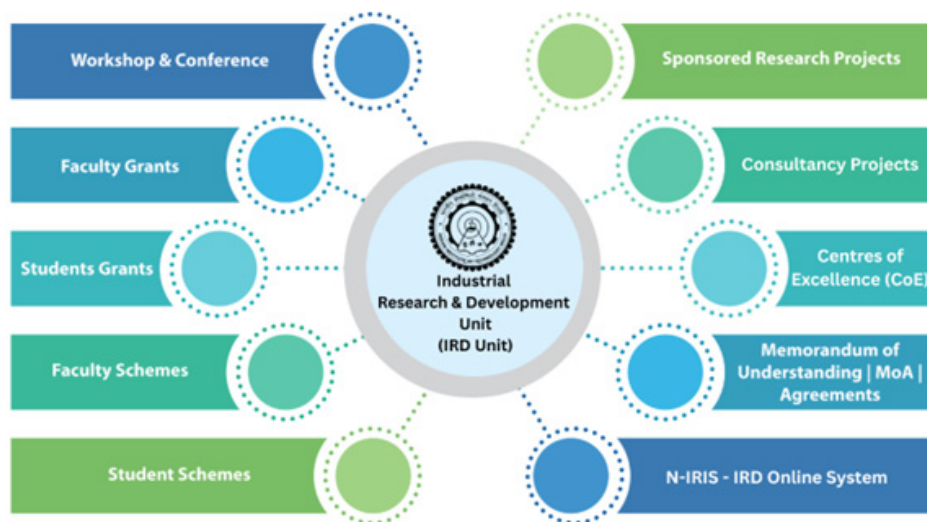
### 8.1 IRD Research Funding - Statistics

#### Sponsored Projects & Consultancy Jobs

A total of 644 sponsored projects and consultancies with a total funding of Rs. 364.40 Crores were undertaken through the IRD Unit in the calendar year 2025.



The IRD runs many schemes to encourage Research and Development among the faculty and students of IIT Delhi.



IRD's role has diversified over the years

<https://ird.iitd.ac.in/>

## 8.2 IRD Support to Faculty Members

**Research Grant for New Faculty Members:** IRD provides a one-time grant of INR One lakh to each new faculty member joining the Institute.

**New Faculty Seed Grant (NFSG):** A new faculty seed grant (NFSG) of up to INR 20 lakhs is available to new faculty joining the Institute and must be availed within 3 years of joining.

**Equipment Matching Grant:** An equipment matching grant (EMG) of up to INR 30 lakhs is available for faculty, tied to externally funded sponsored projects approved within three years of their joining. Faculty can apply for the EMG multiple times until the maximum limit is reached, with a one-year period to utilize the funds from each sanction. The equipment acquired does not need to be related to the sponsored projects, but the EMG cannot be used for personal devices, furniture, or office supplies.

**Faculty Travel Grant:** As per the newly constituted faculty travel grant, in addition to the support provided by the Government of India under Professional development allowance (PDA), in a three-year block, an additional INR 3 lakhs are being provided to cover expenses related to national & international conferences, including travel, conference registration fees, accommodation, visas, insurance, DA, and allied expenses.

**Deepak Raghavan Family Foundation (DRFF) Accelerator Program:** In association with dean alumni relations, IRD has launched a special research program under DRFF. It is specifically designed to support young faculty members (up to 45 years of age) and provides both a chair professorship and a 5-year research grant.

### 8.3 IRD Schemes for Students

- **Summer Undergraduate Research Award (SURA):** The SURA scheme is one of the most popular, aiming to encourage research and development activities among young undergraduate students. Students are encouraged to take the initiative in identifying investigations, analysing research problems, and formulating solutions.
- **IRD Provides Gap Period Assistantships/Fellowships:** For Ph.D., M.Tech., and M.S.(R.) students who previously received funding from projects. These assistantships are designed to support students during the gap after project completion when no other funding is available. M.Tech and M.S.(R.) students can receive support for up to 6 months, while Ph.D. students may be supported for a maximum of 1 year during this period.
- **IRD Early-Doc Fellowships:** Offer support to Ph.D. students at IIT Delhi post-Ph.D. viva, providing INR 40,000 per month for up to 3 months to help complete their thesis manuscript. The scheme is undergoing revision to promote early completion of degrees.
- **Research Excellence Travel Award (RETA):** Highly meritorious research scholars (full-time as well as part-time) are awarded the research excellence travel award (RETA) amounting to INR 2,00,000/- from IRD promotional funds. RETA can be used only for travel to a single conference.

- **Research Scholar Travel Award (RSTA):** All research scholars are awarded a travel grant under the research scholar travel award (RSTA), up to a maximum of INR 1,80,000/- from the IRD research promotion fund, over and above an initial grant of INR 20,000/- provided by the Institute.
- **Student Start-up Action & Discover & Learn (1-2-3-4) Scheme:** IRD launched the student start-up action and discover & learn (1-2-3-4) scheme in 2016 to enhance research skills and experiential learning among students. Since then, 32 student start-up projects and 56 discover & learn projects have been awarded in key research areas.



In the financial year 2024-2025, one student start-up project and 11 discover & learn projects were initiated. The scheme has achieved significant milestones, including 8 publications, 5 patents (filed), and recognition through awards. Ms Kusum Saini received the Vishwakarma award 2024 and the batch of 1969 innovation fellow award 2024. The innovations under the project have led to the creation of a start-up.

## 8.4 IITD Open House

The open house is a flagship initiative by IIT Delhi that showcases cutting-edge research by its students and faculty to funding agencies, industry, and school and college students.



Around 3000-4000 visitors, including senior students from various schools & colleges, their teachers, and representatives from industry and funding agencies, visit the open house every year to explore the country's premier science and engineering institution. Visitors witness ground breaking research, innovative projects, and scientific posters.

## 8.5 Centres of Excellence

The Institute has signed a total of 12 MoUs over the last 5 years (January 2021 – December 2025) to set up Centres of Excellence (CoE) for advanced research, innovation, and capacity building in focused domains, including intelligent and clean river systems, regulatory affairs in power systems, sustainable Ayurveda, climate modelling, AI, energy technologies, quantum technologies, smart textiles, process safety and risk management, precision medicine & Medtech, ultra-precision optics manufacturing, and space technologies.

## 8.6 MoUs Executed & Important Research Initiatives

IRD has initiated a total of 57 MoUs with International organisations/ universities over the last 5 years (January 2021 – December 2025).

Of these, 19 MoUs have been signed with international organisations to focus on the following thematic areas: business & trade; sustainable home appliance technologies; mobility technologies; precision & patient-specific medicine; biotechnology; optics; quantum technologies; hydroelectric power; semiconductor; AI/ML, among others.

Additionally, 38 MoUs have been signed with national universities/organisations/ industries focusing on research areas of law, petroleum & energy, health-tech & medical technologies, skill development, defence, advanced materials, soil, water and environment protection, carbon dioxide capture and utilisation (CCU), agriculture technologies, infrastructure development, data mining and big data analysis, etc.

These MoUs establish a framework for collaborative programmes across one or more disciplines in science, management, engineering, and social sciences, promoting research cooperation, academic exchange, and shared use of laboratory facilities in areas of mutual interest.

## 8.7 Global Research Partnership (GPR) Programme

The IRD unit has initiated a seed-funded collaborative program with national and global research partners from various universities, each with complementary expertise, to address the technological challenges facing our societies and planet earth.

GRP, which was formerly known as the Multi-Institute faculty Interdisciplinary Projects (MFIRP) program, offers seed grants to facilitate connections among faculty teams from at least two institutions. Each institution supports its faculty member on the joint project. The support from the institution typically amounts to INR 5 to 10 Lakh over a period of one to two years, depending on the agreements between the institutions.

To date, IRD has supported 119 joint projects with national universities and 194 with international universities, totalling 313 GRP projects.

At present, about (57+24) 81 Joint Research Projects/programmes with the three (3) National and ten (10) International Universities are being supported under the GRP scheme of IRD. These institutions are:

## International

- **Hebrew University of Jerusalem, Israel**
- **National Yang Ming Chiao Tung University, Taiwan**
- **Technical University of Delft, Netherlands**
- **University College of London, United Kingdom**
- **University at Buffalo, USA**
- **University of Sorbonne, France**
- **University of Exeter, UK**
- **Khalifa University, UAE**
- **Mohamed bin Zayed University of Artificial Intelligence, UAE**
- **University of Queensland, Australia**

## National

- **Institute of Liver and Biliary Sciences (ILBS), New Delhi**
- **All India Institute of Medical Sciences (AIIMS), New Delhi**
- **Regional Centre for Biotechnology (RCB), Faridabad**

## 8.8 Joint Degree Programme



**National Yang Ming Chiao Tung University, Taiwan (NYCU)-IIT Delhi Programme:** IIT Delhi and National Yang-Ming Chiao Tung University (NYCU), Taiwan, have reaffirmed their academic partnership by renewing the Joint Doctoral Program (JDP) Memorandum of Agreement (MoA) on 29 August 2024. This collaboration continues to foster research excellence and interdisciplinary innovation, particularly in semiconductor technologies. Admissions are open year-round; details are available on the NYCU-IITD website: <https://nycu.iitd.ac.in>

### Major Achievements:

- Several students have co-authored research papers and conference proceedings as part of their JDP requirements.
- Notably, multiple students have received industry sponsorships from Micron, MediaTek, and TSMC during their research tenure at NYCU.
- A few research scholars have joined for a post-doc at NYCU.
- NYCU has awarded journal papers to three (3) IITD-NYCU JDP students under the “Incentives for the Excellent Research Results derived from students” Scheme, amounting to 20,000 NTD per paper.



**University of Queensland, Australia (UQ-IITD Research Academy):** The UQ-IITD Research Academy (Academy) was established in 2018 as a joint venture between The University of Queensland (UQ) and the Indian Institute of Technology Delhi (IITD). UQ and IITD share a vision of success: contributing to the world through research excellence. This collaboration aims to support research impact and build a long-term, sustainable and mutually beneficial partnership for both institutions. The Academy represents an innovative partnership that is developing a substantial transnational collaborative research program with the flagship initiative of a joint Ph.D. program involving all faculties and research institutes at both institutions.

Students work on a broad range of projects that leverage the joint expertise, facilities, and research strengths of both institutions to address pressing global issues. While primarily based at their home institution, students benefit from dual supervision from both UQ and IITD. Their candidature includes 12 months at the partner university. Upon successful completion of the program, students receive a jointly awarded Ph.D. degree from both UQ and IITD. To date, the Academy has 135 enrolled students and 23 graduates. The Academy offers up to 25 Ph.D. scholarships to new students annually, in addition to externally funded students.

To learn more about the Academy, please visit <https://uqiitd.org/>



**Sorbonne University (SU), France:** The IITD-SU one health campus is a strategic partnership between the Indian Institute of Technology Delhi (IITD) and Sorbonne University (SU). This multidisciplinary platform focuses on healthcare research and education, integrating bioengineering, artificial intelligence, neuroscience, and cancer therapeutics. Key milestones include the signing of a Memorandum of Understanding (MoU) in June 2023. As part of this initiative, 30 students were enrolled in two schools—Winter and Spring—for the academic years 2024 and 2025. Additionally, a joint degree program with Sorbonne University was approved in July 2025. The initiative aims to advance global health solutions by leveraging the combined expertise of both institutions. <https://international.iitd.ac.in/student-exchanges/>



## ADMINISTRATIVE STRUCTURE

### THE VISITOR

**Smt. Droupadi Murmu**

(Hon'ble President of India)

### CHAIRPERSON, BOARD OF GOVERNORS

**Harish Salve**, King's Counsel & Sr. Advocate

### DIRECTOR

**Prof. Rangan Banerjee**

### DEPUTY DIRECTORS

**Prof. Arvind K. Nema** (Operations) | **Prof. Vivek V. Buwa** (Strategy and Planning)

### DEANS

**Prof. Dhanya C.T.** : Academics

**Prof. Siddharth Pandey** : Faculty

**Prof. Ashwini K. Agrawal** : Research & Development

**Prof. Anil Verma** : International Programme

**Prof. B.K. Panigrahi** : Student Affairs

**Prof. Dipti Ranjan Sahoo** : Infrastructure

**Prof. Somnath Baidya Roy** : Planning

**Prof. Jayant Jain**: Corporate Relations

**Prof. Nilanjan Senroy** : Alumni Relations

**Prof. Deepak Kumar** : Diversity & Inclusion

### ASSOCIATE DEANS

**Prof. Abhijeet Raj** : Academics (Curriculum)

**Prof. Supreet Singh Bagha** : Academics (PG Research)

**Prof. Shilpi Sharma** : Academics (ONI)

**Prof. Shuchi Sinha** : Faculty

**Prof. Sunil Jha**: Research & Development

**Prof. S. Pradyumna** : Students Events

**Prof. Prabal Talukdar** : Hostel Management

**Prof. Sridevi Upadhyayula**: Student Welfare

**Prof. Seshan Srirangarajan** : Infrastructure (Electrical)

**Prof. Sri Harsha Kota** : Infrastructure (Renovation)

**Prof. Amit Gupta** : Infrastructure (Maintenance)

### REGISTRAR

**Atul Vyas**

## CHAIRPERSONS OF THE BOARDS

<b>Rangan Banerjee</b>	Board of Educational Research and Planning, Executive Committee of the Senate, Student Affairs Council
<b>Dhanya C.T.</b>	Board for Academic Programmes

## PRESIDENTS OF BOARDS FOR STUDENT ACTIVITIES

<b>Priyanka Kaushal</b>	Board for Students Publications (BSP)
<b>Bappaditya Manna</b>	Board of Recreational and Creative Activities (BRCA)
<b>Prabal Talukdar</b>	Board of Hostel Management (BHM)
<b>Sreedevi Upadhyayula</b>	Student Teacher Interaction Committee (STIC)
<b>Vireshwar Kumar</b>	Board for Sports Activities (BSA)
<b>Sreedevi Upadhyayula</b>	Board for Students Welfare (BSW)
<b>Kaushik Mukherjee</b>	Vice President, BSW & Coordinator, Student Mentorship Programme
<b>Srinivasan Venkataraman</b>	Vice President, BSA
<b>Tapan K. Nayak</b>	Vice President, BRCA

## OTHERS

<b>Sarvesh K. Srivastava</b>	Advisor, Foreign Students
<b>Sujit Manna</b>	Coordinator, NCC
<b>Kamana Porwal</b>	Coordinator, NCC (Female)
<b>Ankesh Jain</b>	Coordinator, NSS
<b>Manoj Charandas Ramteke</b>	Coordinator, SC/ST Preparatory Course
<b>Sujin B. Babu</b>	Advisor, Office of Accessible Education (OAE-I)
<b>Gourab Kar</b>	Advisor, Office of Accessible Education (OAE-II)
<b>Shahzad Gani</b>	Advisor, Indradhanu
<b>Yashpal Jogdand</b>	Advisor, SC/ST students and Initiative for Caste Equity
<b>Rijurekha Sen</b>	Convenor, Initiative for Gender Equity and Sensitisation
<b>Sanjiva Prasad</b>	Co- Convenor, Initiative for Gender Equity and Sensitisation

## CHAIRPERSONS OF ACADEMIC ACTIVITIES

**Smruti Ranjan Sarangi**

*Head, CSC (Ex-Officio)*

Computer User's Committee (CUC)

**Sudip K. Pattanayek**

Chairperson, JEE (Advanced - 2026)

**Pramit K. Chowdhury**

Vice- Chairperson, JEE (Advanced – 2026)

**B.J. Alappat**

Advisory Committee for Library (ACL)

**Vimlesh Pant**

Chairperson (GATE/JAM-2026)

**Shaikh Z. Ahammad, Josemon Jacob**

Vice-Chairperson (GATE/JAM-2026)

**Sreedevi Upadhyayula**

*President, BSW (Ex-Officio)*

Head, Students Counselling Services (SCS)

**Neeraj Chaurasia**

Hindi Cell (Head)

**Sumit Pramanick**

Grades & Registration (UG & PG)

**Subhra Datta**

Time Table Committee (UG & PG)

**Manoj Kumar C. Ramteke**

Head, QIP/CEP/OCDC

## COORDINATORS OF INTERDISCIPLINARY PROGRAMMES

**Ankesh Jain**

VLSI Design Tools & Technology (JVL, JVY)

**Jolly Xavier P.**

Instrument Technology (JID)

**Sandeep Kumar**

Telecom Technology and Management (JTM)

**Huzur Saran**

Cyber Security (JCS)

**Shubhendu Bhasin**

Robotics (JRB)

**Amartya Sengupta (Physics),**

Optoelectronics & Optical Communications (JOP)

**Santanu Manna (Electrical)**

## CENTRAL WORKSHOP

**Sunil Jha**

Head

## WARDENS AND ASSOCIATE WARDENS OF HOSTELS

<b>Ankesh Jain</b>	Aravali
<b>Ankush Agrawal</b>	Jwalamukhi
<b>Minakshi Kumari</b>	Kailash
<b>Bipin Kumar</b>	Karakoram
<b>Sahil Bansal</b>	Kumaon
<b>Pintu Das</b>	Nilgiri
<b>Arnab Chanda</b>	Shivalik
<b>Harun Venkatesan</b>	Vindhyachal
<b>Samiran Mandal</b>	Girnar
<b>Saran Kumar</b>	Zanskar
<b>Prasanna R.</b>	Udaigiri
<b>Pooja Ghosh</b>	Himadri
<b>Vikrant</b>	Satpura
<b>Biswarup Mukherjee</b>	Dronagiri
<b>Shahab Fatima</b>	Sahyadri
<b>Biswajita Parida</b>	Saptagiri
<b>Archana Samanta</b>	Nalanda / IP / New Vindhyachal / Transit Accommodation

## PROFESSOR-IN-CHARGE OF DIFFERENT SECTIONS

<b>Sri Harsha Kota</b>	Guest Houses & Halls
<b>Subhra Datta</b>	LHC
<b>S. Nagendran</b>	EHLS Unit
<b>Naresh Varma Datla</b>	OCS

## CVC

**Chief Vigilance Officer**

S.K. Saha

## RTI

**Public Information Officer**

Deepak Raja

**First Appellate Authority**

N. Bhaskar

**Transparency Officer**

Atul Vyas

## ADMINISTRATION

**Atul Vyas**

Registrar

**K.K. Bhattacharjee** *(on deputation)*

Joint Registrar

**Mohd. Shamim**

Joint Registrar (Accounts)

**N. Bhaskar**

Joint Registrar (Director's Office, Vigilance, Grievances Matters & First Appellate Authority)

**Alan V. Sinate**

Deputy Registrar (Academics)

**Deb Ranjan Mukherjee**

Deputy Registrar (E-I, IRD (Accounts), Timble)

**Amitabh Mukherjee**

Deputy Registrar (Audit)

**Sanjay Pande**

Deputy Registrar (E-II, Training Cell)

**Rama Sharma**

Deputy Registrar (Recruitment Cell)

**Pankaj Prasad**

Assistant Registrar (Accounts)

**Kumar Saurabh**

Assistant Registrar (Academic Section, IIT Sonipat Campus)

**Sneha Jalan**

Assistant Registrar (Works)

**Manish Bhardwaj**

Assistant Registrar (Hospital & Health Services, Roster, Store and Purchase Section)

**Deepak Raja**

Assistant Registrar (Legal Cell, ERP, E - Office, Coordination, R&I Unit, RTI Cell)

**Suchitra Bhatnagar**

Assistant Registrar (Planning Unit)

**Rajneesh Jaryal**

Assistant Registrar (Student Affairs)

**Cursevak Singh**

Assistant Registrar (Academics)

**Shiv Prakash Yadav**

Public Relation Officer ; In-Charge - Publication Cell

**Ashok Kumar** *(Acting)*

Institute Engineer

<b>Anuj Gaur</b>	Executive Engineer (Civil)
<b>Ashok Kumar</b>	Executive Engineer (Civil)
<b>Ashish Kumar Vinodiya</b>	Executive Engineer (Electrical)
<b>Rafat Jamal</b>	Executive Engineer (Electrical)
<b>Raju Ram Parihar</b>	Executive Engineer (Civil)
<b>Pradip Karmakar</b>	Assistant Executive Engineer (Electrical)
<b>Ashok Kumar Singh</b>	Assistant Executive Engineer (Civil Maintenance and PH)
<b>Rajagopal Atmakura</b>	Assistant Executive Engineer (Electrical)
<b>Deepak Tyagi</b>	Assistant Executive Engineer (Electrical)
<b>Rajesh Kumar</b>	Assistant Executive Engineer (Civil)
<b>Swati Thakur</b>	Hindi Officer
<b>Sarvesh Kumar Srivastva</b>	Safety Officer
<b>Bharat Wadhwa</b>	Sr. System Analyst
<b>Bhupender Singh</b> <i>(on deputation)</i>	Principal Technical Officer
<b>Uday Dadwal</b>	Principal Technical Officer
<b>Vandana Ahluwalia</b>	Technical Officer
<b>Manjit Singh</b>	Technical Officer
<b>Ajay Pratap Singh</b>	Technical Officer
<b>Amit Bundela</b>	Technical Officer
<b>Lokendra Singh Dangri</b>	Technical Officer
<b>Jaswant Deepak Bara</b>	Technical Officer
<b>Divya Sachdeva</b>	Technical Officer
<b>Ashok Kumar Lunia</b>	Technical Officer
<b>Anil R.</b>	Technical Officer
<b>Sujith S.</b>	Technical Officer
<b>Boorla Sagar Kumar</b>	Technical Officer
<b>Ashish Kumar Vijay</b>	Technical Officer
<b>Prashant Paul</b>	Technical Officer
<b>Nitish Kumar</b>	Technical Officer
<b>Rajeev Ranjan Rathour</b>	Technical Officer
<b>M.K. Sagar</b>	CMO (SAG)

<b>Ajay Kumar Jain</b>	CMO (SAG)
<b>Anila Khosla</b>	CMO (SAG)
<b>P. K. Rajesh</b>	CMO (NFSG)
<b>Md. Ashfaque Hussain</b>	CMO (NFSG)
<b>Sayed Yasmeen Raunaq</b>	CMO
<b>L. Pangerlemba</b>	CMO
<b>Rajlaxmi Borah</b>	Sr. Medical Officer
<b>Shalini Singh</b>	Medical Officer (Dental)
<b>Anishya Obhrai Madan</b>	Industrial Liaison Officer
<b>Garima Singh</b>	Training & Placement Officer
<b>Shachi Mathur</b>	Senior Counsellor
<b>Aakriti Astha</b> (On EOL)	Counsellor (On EOL)
<b>Mamta Sinha</b>	Counsellor
<b>Sandeep Sharma</b>	Security Officer
<b>Kapil Kumar</b>	Security Officer
<b>Deepak Negi</b>	Sports Officer
<b>Rekha Sati Deoli</b>	Joint Sports Officer

# INDIAN INSTITUTE OF TECHNOLOGY DELHI

## THE HONOUR CODE

I ....., Entry No..... do hereby undertake that as a student at IIT Delhi :

1. I will not give or receive aid in examinations; that I will not give or receive unpermitted aid in class work, in preparation of reports, or in any other work that is to be used by the instructor as the basis of grading; and
2. I will do my share and take an active part in seeing to it that others as well as myself uphold the spirit and letter of the Honour Code.
  - I realise that some examples of misconduct which are regarded as being in violation of the Honour Code include :
    - Copying from another's examination paper or allowing another to copy from one's own paper;
    - Unpermitted collaboration;
    - Plagiarism;
    - Revising and resubmitting a marked quiz or examination paper for re-grading without the instructor's knowledge and consent;
    - Giving or receiving unpermitted aid on take home examinations;
    - Representing as one's own work, the work of another, including information available on the internet;
    - Giving or receiving aid on an academic assignment under circumstances in which a reasonable person should have known that such aid was not permitted; and
    - Committing a cyber-offence, such as, breaking passwords and accounts, sharing passwords, electronic copying, planting viruses, etc.

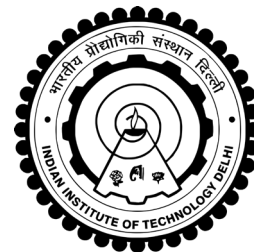
I accept that any act of mine that can be considered to be an Honour Code violation will invite disciplinary action.

Date.....

Student's Signature.....

Name.....

Entry No.....



# INDIAN INSTITUTE OF TECHNOLOGY DELHI

HAUZ KHAS, NEW DELHI-110016

[www.iitd.ac.in](http://www.iitd.ac.in)